

Fibulin-7 Polyclonal antibody

Catalog Number: 21136-1-AP

Basic Information

Catalog Number:

21136-1-AP

Size:

450 µg/ml

Source:

Rabbit

Isotype:

IgG

Immunogen Catalog Number:

AG15564

GenBank Accession Number:

BC035784

GeneID (NCBI):

129804

UNIPROT ID:

Q53RD9

Full Name:

fibulin 7

Calculated MW:

439 aa, 47 kDa

Observed MW:

47 kDa

Purification Method:

Antigen Affinity purified

Recommended Dilutions:

WB 1:500-1:1000

Applications

Tested Applications:

WB, ELISA

Species Specificity:

human, pig

Positive Controls:

WB : pig cartilage tissue,

Background Information

Fibulins are a family of extracellular matrix glycoproteins associated with basement membranes, elastic fibers, and other matrices (PMID: 19189051). The family members are defined by the presence of two structural modules, a tandem repeat of epidermal growth factor-like modules, and a unique C-terminal fibulin-type module (PMID: 19189051). They play an important role in regulating multiple cellular functions such as adhesion, growth, motility, and survival (PMID: 32429873). Fibulin-7, also named as TM14, was first identified in the mouse tooth germ cDNA microarray by differential hybridization (PMID: 17699513). Fibulin-7 is expressed in developing odontoblasts, in the giant trophoblast layer of the placenta, in the choroid of the eyes as well as in the cartilage (PMID: 32429873). It plays important roles in both the differentiation and maintenance of odontoblasts as well as in dentin formation.

Storage

Storage:

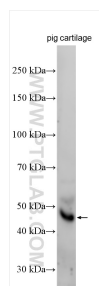
Store at -20°C. Stable for one year after shipment.

Storage Buffer:

PBS with 0.02% sodium azide and 50% glycerol pH 7.3.

Aliquoting is unnecessary for -20°C storage

Selected Validation Data



pig cartilage tissue was subjected to SDS PAGE followed by western blot with 21136-1-AP (Fibulin-7 antibody) at dilution of 1:600 incubated at room temperature for 1.5 hours.