

For Research Use Only

LIPC Polyclonal antibody

Catalog Number: 21133-1-AP

Featured Product

5 Publications



Basic Information

Catalog Number:

21133-1-AP

Size:

300 µg/ml

Source:

Rabbit

Isotype:

IgG

Immunogen Catalog Number:

AG15538

GenBank Accession Number:

BC146659

GeneID (NCBI):

3990

UNIPROT ID:

P11150

Full Name:

lipase, hepatic

Calculated MW:

499 aa, 56 kDa

Observed MW:

65 kDa

Purification Method:

Antigen affinity purification

Recommended Dilutions:

WB 1:1000-1:4000

IHC 1:20-1:200

IF 1:20-1:200

Applications

Tested Applications:

IF/ICC, IHC, WB, ELISA

Cited Applications:

WB, IHC

Species Specificity:

human, mouse, rat

Cited Species:

human, mouse, rat

Note-IHC: suggested antigen retrieval with TE buffer pH 9.0; (*) Alternatively, antigen retrieval may be performed with citrate buffer pH 6.0

Positive Controls:

WB : mouse heart tissue, mouse liver tissue, HepG2 cells, rat heart tissue

IHC : human lung cancer tissue,

IF : HepG2 cells,

Background Information

LIPC, also named as HTGL and HL, belongs to the AB hydrolase superfamily and Lipase family. It has the capacity to catalyze hydrolysis of phospholipids, mono-, di-, and triglycerides, and acyl-CoA thioesters. LIPC is an important enzyme in HDL metabolism. It binds heparin.

Notable Publications

Author	Pubmed ID	Journal	Application
Ruxia Deng	36274132	J Transl Med	IHC
Ling Chen	32720164	Arch Pharm Res	WB
Karuna Irungbam	32612285	Lab Invest	IHC

Storage

Storage:

Store at -20°C. Stable for one year after shipment.

Storage Buffer:

PBS with 0.02% sodium azide and 50% glycerol pH 7.3.

Aliquoting is unnecessary for -20°C storage

For technical support and original validation data for this product please contact:

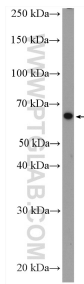
T: 4006900926

E: Proteintech-CN@ptglab.com

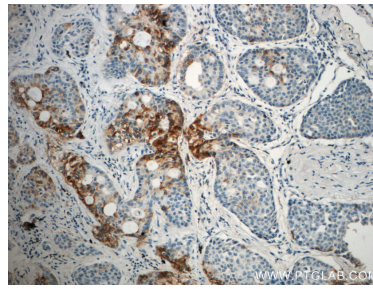
W: ptgcn.com

This product is exclusively available under Proteintech Group brand and is not available to purchase from any other manufacturer.

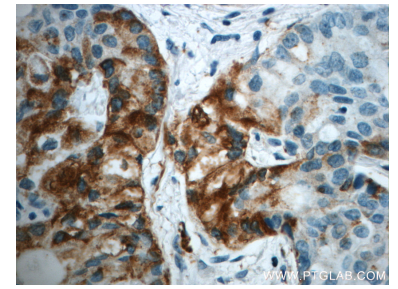
Selected Validation Data



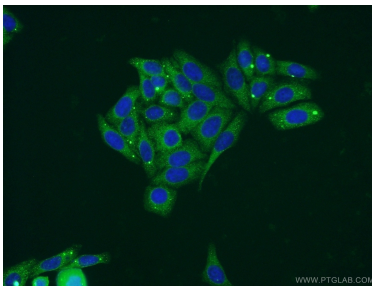
HepG2 cells were subjected to SDS PAGE followed by western blot with 21133-1-AP (LIPC antibody) at dilution of 1:300 incubated at room temperature for 1.5 hours.



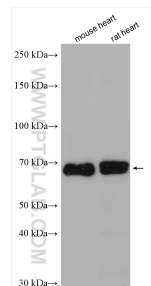
Immunohistochemical analysis of paraffin-embedded human lung cancer slide using 21133-1-AP (LIPC Antibody) at dilution of 1:50.



Immunohistochemical analysis of paraffin-embedded human lung cancer slide using 21133-1-AP (LIPC Antibody) at dilution of 1:50.



Immunofluorescent analysis of HepG2 cells using 21133-1-AP (LIPC antibody) at dilution of 1:50 and Alexa Fluor 488-conjugated AffiniPure Goat Anti-Rabbit IgG(H+L).



Various lysates were subjected to SDS PAGE followed by western blot with 21133-1-AP (LIPC antibody) at dilution of 1:2000 incubated at room temperature for 1.5 hours.