

# MAN2A1 Polyclonal antibody

Catalog Number: 21132-1-AP

## Basic Information

**Catalog Number:**

21132-1-AP

**Size:**

400 µg/ml

**Source:**

Rabbit

**Isotype:**

IgG

**Immunogen Catalog Number:**

AG15536

**GenBank Accession Number:**

BC142656

**GeneID (NCBI):**

4124

**UNIPROT ID:**

Q16706

**Full Name:**

mannosidase, alpha, class 2A, member 1

**Calculated MW:**

1144 aa, 131 kDa

**Purification Method:**

Antigen affinity purification

**Recommended Dilutions:**

IHC 1:50-1:500

IF/ICC 1:20-1:200

## Applications

**Tested Applications:**

IF/ICC, IHC, ELISA

**Species Specificity:**

human, mouse

**Note-IHC:** suggested antigen retrieval with **TE buffer pH 9.0**; (\*) Alternatively, antigen retrieval may be performed with **citrate buffer pH 6.0**

**Positive Controls:**

IHC : human stomach tissue, mouse stomach tissue

IF/ICC : HeLa cells,

## Background Information

### Storage

**Storage:**

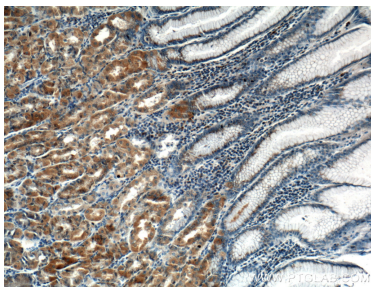
Store at -20°C. Stable for one year after shipment.

**Storage Buffer:**

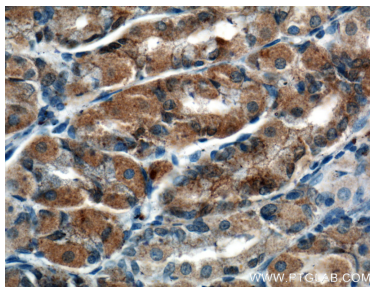
PBS with 0.02% sodium azide and 50% glycerol pH 7.3.

Aliquoting is unnecessary for -20°C storage

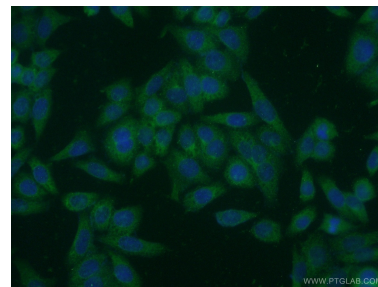
## Selected Validation Data



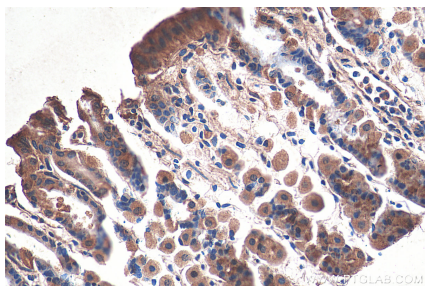
Immunohistochemical analysis of paraffin-embedded human stomach tissue slide using 21132-1-AP (MAN2A1 antibody) at dilution of 1:200 (under 10x lens).



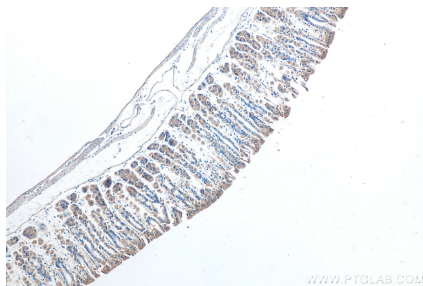
Immunohistochemical analysis of paraffin-embedded human stomach tissue slide using 21132-1-AP (MAN2A1 antibody) at dilution of 1:200 (under 40x lens).



Immunofluorescent analysis of HeLa cells using 21132-1-AP (MAN2A1 antibody) at dilution of 1:50 and Alexa Fluor 488-conjugated AffiniPure Goat Anti-Rabbit IgG(H+L).



Immunohistochemical analysis of paraffin-embedded mouse stomach tissue slide using 21132-1-AP (MAN2A1 antibody) at dilution of 1:200 (under 40x lens).



Immunohistochemical analysis of paraffin-embedded mouse stomach tissue slide using 21132-1-AP (MAN2A1 antibody) at dilution of 1:500 (under 10x lens).