

Collagen Type XXVI Polyclonal antibody

Catalog Number: 21106-1-AP

Basic Information

Catalog Number:	GenBank Accession Number:	Purification Method:
21106-1-AP	BC110393	Antigen affinity purification
Concentration:	GeneID (NCBI):	Recommended Dilutions:
800 ug/ml	136227	IHC 1:200-1:800
Source:	UNIPROT ID:	IF/ICC 1:50-1:500
Rabbit	Q96A83	
Isotype:	Full Name:	
IgG	EMI domain containing 2	
Immunogen Catalog Number:	Calculated MW:	
AG15382	441 aa, 45 kDa	
	Observed MW:	
	45 kDa	

Applications

Tested Applications:	Positive Controls:
IHC, IF/ICC, ELISA	IHC : human colon tissue,
Species Specificity:	IF/ICC : U2OS cells,
human	

Note-IHC: suggested antigen retrieval with TE buffer pH 9.0; (*) Alternatively, antigen retrieval may be performed with citrate buffer pH 6.0

Background Information

COL26A1 (Collagen alpha-1(XXVI) chain), also known as EMID2. It is expected to be located in the cytoplasm and extracellular space. COL26A1 is expressed in many tissues, especially in brain tissues, including cerebral cortex, cerebellum and basal ganglia. In the single cell type, the expression of COL26A1 is mainly concentrated in excitatory and inhibitory neurons. The protein is a new member of the collagen family. Its function has not been fully demonstrated in thyroid cancer (THCA), but it is known that collagen can promote cancer progression. COL26A1 may be involved in immune-related pathways, such as CTLA4 pathway, IL-10 signaling pathway and chemokine receptor binding chemokine. The molecular weight of COL26A1 is 45 kDa. COL26A1 is significantly up-regulated in thyroid carcinoma, and its high expression is related to poor prognosis. It is also significantly related to tumor microenvironment, which may involve immune-related pathways in the process of tumor occurrence (PMID: 38197076).

Storage

Storage:
Store at -20°C. Stable for one year after shipment.
Storage Buffer:
PBS with 0.02% sodium azide and 50% glycerol
Aliquoting is unnecessary for -20°C storage

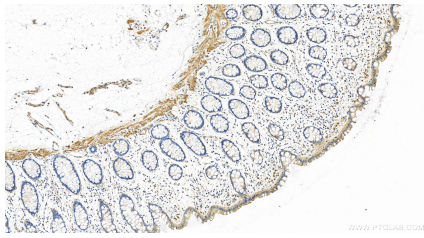
For technical support and original validation data for this product please contact:

T: 4006900926

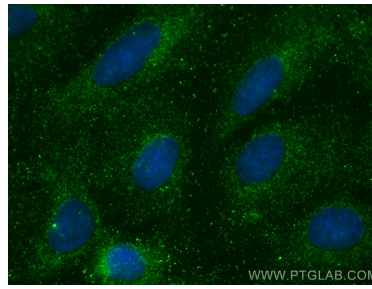
E: Proteintech-CN@ptglab.comW: ptgcn.com

This product is exclusively available under Proteintech Group brand and is not available to purchase from any other manufacturer.

Selected Validation Data



Immunohistochemical analysis of paraffin-embedded human colon tissue slide using 21106-1-AP (EMID2 antibody) at dilution of 1:400 (under 20x lens). Heat mediated antigen retrieval with Tris-EDTA buffer (pH 9.0).



Immunofluorescent analysis of (-20°C Methanol) fixed U2OS cells using EMID2 antibody (21106-1-AP) at dilution of 1:200 and CoraLite® 488-Conjugated AffiniPure Goat Anti-Rabbit IgG(H+L).