

For Research Use Only

PRAS40 Polyclonal antibody

Catalog Number: 21097-1-AP

Featured Product

3 Publications



Basic Information

Catalog Number:

21097-1-AP

Size:

813 µg/ml

Source:

Rabbit

Isotype:

IgG

Immunogen Catalog Number:

AG15355

GenBank Accession Number:

BC051844

GeneID (NCBI):

84335

UNIPROT ID:

Q96B36

Full Name:

AKT1 substrate 1 (proline-rich)

Calculated MW:

27 kDa

Observed MW:

40 kDa

Purification Method:

Antigen affinity purification

Recommended Dilutions:

WB 1:500-1:2000

IHC 1:50-1:500

IF/ICC 1:50-1:500

Applications

Tested Applications:

WB, IHC, IF/ICC, ELISA

Cited Applications:

WB, IF

Species Specificity:

human

Cited Species:

human, mouse

Note-IHC: suggested antigen retrieval with TE buffer pH 9.0; (*) Alternatively, antigen retrieval may be performed with citrate buffer pH 6.0

Positive Controls:

WB : MCF-7 cells, HeLa cells

IHC : human liver tissue,

IF/ICC : HeLa cells,

Background Information

Notable Publications

Author	Pubmed ID	Journal	Application
Gang Chen	33489877	Front Oncol	WB
Xiaoxue Jiang	39261456	Nat Commun	WB, IF
Yun Li	37653491	J Neuroinflammation	WB

Storage

Storage:

Store at -20°C. Stable for one year after shipment.

Storage Buffer:

PBS with 0.02% sodium azide and 50% glycerol pH 7.3.

Aliquoting is unnecessary for -20°C storage

For technical support and original validation data for this product please contact:

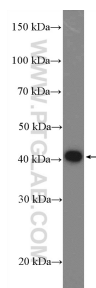
T: 4006900926

E: Proteintech-CN@ptglab.com

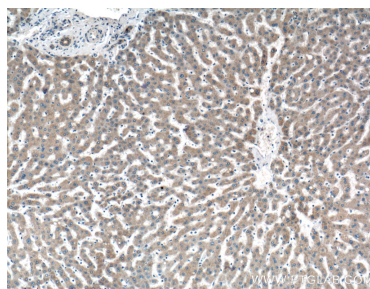
W: ptgcn.com

This product is exclusively available under Proteintech Group brand and is not available to purchase from any other manufacturer.

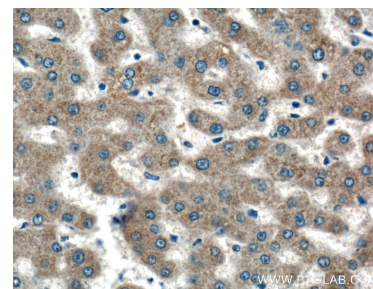
Selected Validation Data



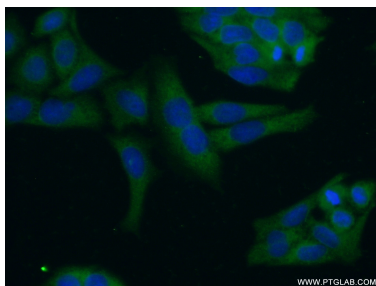
MCF-7 cells were subjected to SDS PAGE followed by western blot with 21097-1-AP (PRAS40 Antibody) at dilution of 1:1000 incubated at room temperature for 1.5 hours.



Immunohistochemical analysis of paraffin-embedded human liver tissue slide using 21097-1-AP (PRAS40 antibody) at dilution of 1:200 (under 10x lens).



Immunohistochemical analysis of paraffin-embedded human liver tissue slide using 21097-1-AP (PRAS40 antibody) at dilution of 1:200 (under 40x lens).



Immunofluorescent analysis of (-20°C Ethanol) fixed HeLa cells using 21097-1-AP (PRAS40 antibody) at dilution of 1:50 and Alexa Fluor 488-conjugated Goat Anti-Rabbit IgG(H+L).