

AFAP1 Polyclonal antibody

Catalog Number: 21093-1-AP

Featured Product

7 Publications

Basic Information

Catalog Number:

21093-1-AP

Size:

600 µg/ml

Source:

Rabbit

Isotype:

IgG

Immunogen Catalog Number:

AG15346

GenBank Accession Number:

BC032777

GeneID (NCBI):

60312

UNIPROT ID:

Q8N556

Full Name:

actin filament associated protein 1

Calculated MW:

730 aa, 81 kDa

Observed MW:

110 kDa

Purification Method:

Antigen affinity purification

Recommended Dilutions:

WB 1:500-1:2000

IHC 1:50-1:500

IF/ICC 1:10-1:100

Applications

Tested Applications:

IF/ICC, IHC, WB, ELISA

Cited Applications:

WB, IF

Species Specificity:

human, mouse, rat

Cited Species:

human, rat

Note-IHC: suggested antigen retrieval with TE buffer pH 9.0; (*) Alternatively, antigen retrieval may be performed with citrate buffer pH 6.0

Positive Controls:

WB : DU 145 cells, mouse brain tissue, rat brain tissue, HeLa cells, MCF-7 cells, PC-3 cells

IHC : human brain tissue,

IF/ICC : MCF-7 cells,

Background Information

Actin filament-associated protein 1 is a protein that in humans is encoded by the AFAP1 gene. The protein encoded by this gene is a Src binding partner. It may represent a potential modulator of actin filament integrity in response to cellular signals, and may function as an adaptor protein by linking Src family members and/or other signaling proteins to actin filaments.

Notable Publications

Author	Pubmed ID	Journal	Application
Yanbing Zhao	32323742	Int J Mol Med	WB
Xu Han	27578191	Biol Res	WB
Deyao Shi	31443665	J Exp Clin Cancer Res	WB

Storage

Storage:

Store at -20°C. Stable for one year after shipment.

Storage Buffer:

PBS with 0.02% sodium azide and 50% glycerol pH 7.3.

Aliquoting is unnecessary for -20°C storage

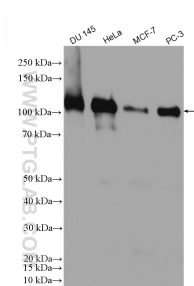
For technical support and original validation data for this product please contact:

T: 4006900926

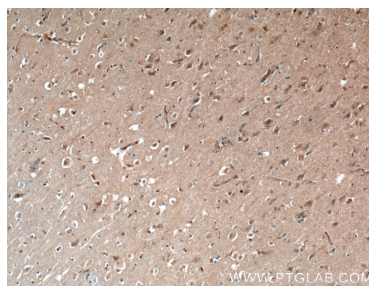
E: Proteintech-CN@ptglab.comW: ptgcn.com

This product is exclusively available under Proteintech Group brand and is not available to purchase from any other manufacturer.

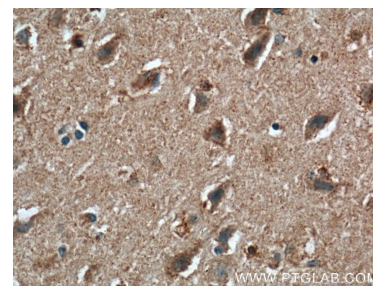
Selected Validation Data



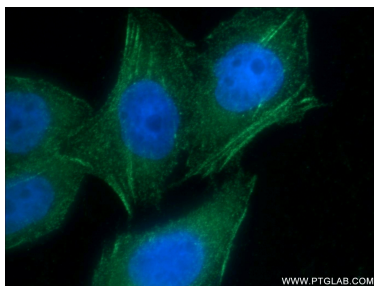
Various lysates were subjected to SDS PAGE followed by western blot with 21093-1-AP (AFAP1 antibody) at dilution of 1:1000 incubated at room temperature for 1.5 hours.



Immunohistochemical analysis of paraffin-embedded human brain tissue slide using 21093-1-AP (AFAP1 Antibody) at dilution of 1:500 (under 10x lens). Heat mediated antigen retrieval with Tris-EDTA buffer (pH 9.0).



Immunohistochemical analysis of paraffin-embedded human brain tissue slide using 21093-1-AP (AFAP1 Antibody) at dilution of 1:500 (under 40x lens). Heat mediated antigen retrieval with Tris-EDTA buffer (pH 9.0).



Immunofluorescent analysis of MCF-7 cells using 21093-1-AP (AFAP1 antibody) at dilution of 1:25 and Alexa Fluor 488-conjugated AffiniPure Goat Anti-Rabbit IgG(H+L).