

For Research Use Only

CHCHD4 Polyclonal antibody

Catalog Number: 21090-1-AP

Featured Product

27 Publications



Basic Information

Catalog Number:

21090-1-AP

Size:

650 µg/ml

Source:

Rabbit

Isotype:

IgG

Immunogen Catalog Number:

AG15339

GenBank Accession Number:

BC033775

GeneID (NCBI):

131474

UNIPROT ID:

Q8N4Q1

Full Name:

coiled-coil-helix-coiled-coil-helix domain containing 4

Calculated MW:

142 aa, 16 kDa

Observed MW:

22 kDa

Purification Method:

Antigen affinity purification

Recommended Dilutions:

WB 1:1000-1:4000

IP 0.5-4.0 µg for 1.0-3.0 mg of total protein lysate

IHC 1:50-1:500

IF/ICC 1:50-1:500

Applications

Tested Applications:

WB, IHC, IF/ICC, IP, ELISA

Cited Applications:

WB, IHC, IF, IP, CoIP

Species Specificity:

human, mouse, rat

Cited Species:

human, mouse, rat

Note-IHC: suggested antigen retrieval with TE buffer pH 9.0; (*) Alternatively, antigen retrieval may be performed with citrate buffer pH 6.0

Positive Controls:

WB: Daudi cells, human heart tissue, mouse lung tissue, mouse spleen tissue, LO2 cells, mouse kidney tissue, Ramos cells, Raji cells, rat brain tissue, mouse brain tissue

IP: mouse brain tissue,

IHC: mouse testis tissue, human kidney tissue

IF/ICC: A431 cells,

Background Information

CHCHD4, a component of human mitochondria, belongs to a protein family. It functions as chaperone and catalyzes the formation of disulfide bonds in substrate proteins, such as COX17. It is required for the import and folding of small cysteine-containing proteins (small Tim) in the mitochondrial intermembrane space (IMS).

Notable Publications

Author	Pubmed ID	Journal	Application
Kenza Nedara	36387192	Front Oncol	WB
Siddhesh Aras	25315652	Mitochondrion	WB
Tibor Balogh	26584568	Pathol Oncol Res	WB

Storage

Storage:

Store at -20°C. Stable for one year after shipment.

Storage Buffer:

PBS with 0.02% sodium azide and 50% glycerol pH 7.3.

Aliquoting is unnecessary for -20°C storage

For technical support and original validation data for this product please contact:

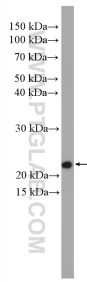
T: 4006900926

E: Proteintech-CN@ptglab.com

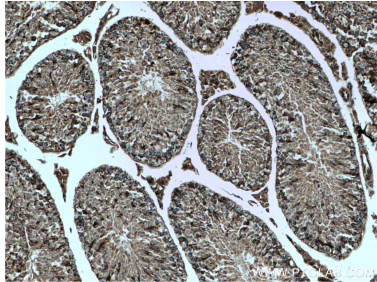
W: ptgcn.com

This product is exclusively available under Proteintech Group brand and is not available to purchase from any other manufacturer.

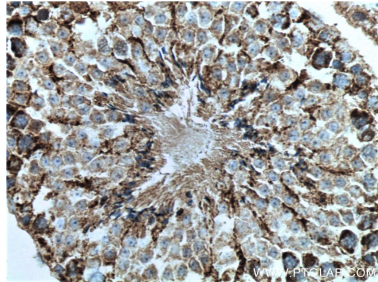
Selected Validation Data



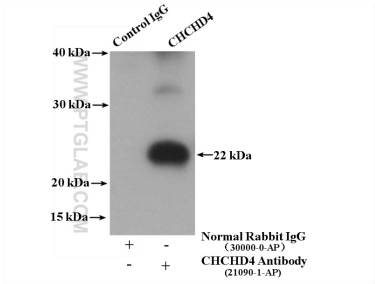
Daudi cells were subjected to SDS PAGE followed by western blot with 21090-1-AP (CHCHD4 antibody) at dilution of 1:2000 incubated at room temperature for 1.5 hours.



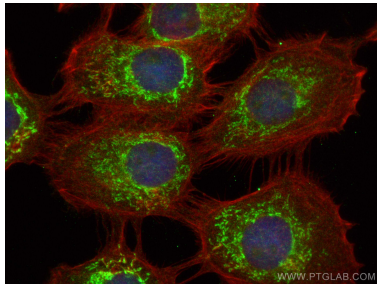
Immunohistochemical analysis of paraffin-embedded mouse testis tissue slide using 21090-1-AP (CHCHD4 antibody) at dilution of 1:200 (under 10x lens. Heat mediated antigen retrieval with Tris-EDTA buffer (pH 9.0).



Immunohistochemical analysis of paraffin-embedded mouse testis tissue slide using 21090-1-AP (CHCHD4 antibody) at dilution of 1:200 (under 40x lens. Heat mediated antigen retrieval with Tris-EDTA buffer (pH 9.0).



IP result of anti-CHCHD4 (IP:21090-1-AP, 4ug; Detection:21090-1-AP 1:1000) with mouse brain tissue lysate 3200 ug.



Immunofluorescent analysis of (4% PFA) fixed A431 cells using CHCHD4 antibody (21090-1-AP) at dilution of 1:200 and CoraLite®488-Conjugated Goat Anti-Rabbit IgG(H+L), CL594-Phalloidin (red).