

For Research Use Only

# ELOF1 Polyclonal antibody

Catalog Number: 21070-1-AP



## Basic Information

Catalog Number:

21070-1-AP

Concentration:

450 ug/ml

Source:

Rabbit

Isotype:

IgG

Immunogen Catalog Number:

AG15213

GenBank Accession Number:

BC007516

GeneID (NCBI):

84337

UNIPROT ID:

P60002

Full Name:

elongation factor 1 homolog (S. cerevisiae)

Calculated MW:

9.5 kDa

Observed MW:

9 kDa

Purification Method:

Antigen affinity purification

Recommended Dilutions:

WB 1:500-1:1000

## Applications

Tested Applications:

WB, ELISA

Species Specificity:

human, mouse, rat

Positive Controls:

WB : mouse testis tissue, HEK-293 cells, rat testis tissue

## Background Information

ELOF1 (elongation factor 1 homologue) is a small (83 aa), evolutionarily conserved, RNAPII-associated transcription elongation factor that is also a core component of the transcription-coupled DNA repair machinery with an additional role in preventing DNA damage during DNA replication (PMID: 34108663). Loss of ELOF1 strongly compromises AID-mediated deamination, SHM, and CSR, and that this is accompanied by a decrease in parameters of RNAPII pausing/stalling and in RNAPII RNA synthesis without a decrease in levels of S2P-RNAPII (PMID: 39386505).

## Storage

Storage:

Store at -20°C. Stable for one year after shipment.

Storage Buffer:

PBS with 0.02% sodium azide and 50% glycerol pH 7.3.

Aliquoting is unnecessary for -20°C storage

For technical support and original validation data for this product please contact:

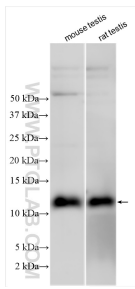
T: 4006900926

E: [Proteintech-CN@ptglab.com](mailto:Proteintech-CN@ptglab.com)

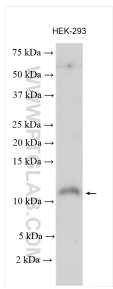
W: [ptgcn.com](http://ptgcn.com)

This product is exclusively available under Proteintech Group brand and is not available to purchase from any other manufacturer.

## Selected Validation Data



Various lysates were subjected to SDS PAGE followed by western blot with 21070-1-AP (ELOF1 antibody) at dilution of 1:800 incubated at room temperature for 1.5 hours.



Various lysates were subjected to SDS PAGE followed by western blot with 21070-1-AP (ELOF1 antibody) at dilution of 1:600 incubated at room temperature for 1.5 hours.