

For Research Use Only

# SIM2 Polyclonal antibody, PBS Only

Catalog Number: 21069-1-PBS



## Basic Information

Catalog Number:

21069-1-PBS

Concentration:

1 mg/ml

Source:

Rabbit

Isotype:

IgG

Immunogen Catalog Number:

AG15204

GenBank Accession Number:

BC110444

GeneID (NCBI):

6493

UNIPROT ID:

Q14190

Full Name:

single-minded homolog 2  
(Drosophila)

Calculated MW:

667 aa, 73 kDa

Observed MW:

60-64 kDa

Purification Method:

Antigen affinity purification

## Applications

Tested Applications:

WB, IHC, IP, Indirect ELISA

Species Specificity:

human, mouse

## Background Information

SIM2, also named as single-minded homolog 2, is a 667 amino acid protein, which contains 1 bHLH (basic helix-loop-helix) domain and one PAS-associated C-terminal domain. SIM2 localizes in the nucleus and has two isoforms. Isoform SIM2 is a 73 kDa protein and Isoform SIM2S is 63 kDa protein. SIM2 as a transcription factor may be a master gene of CNS development in cooperation with Arnt. It may have pleiotropic effects in the tissues expressed during development.

## Storage

Storage:

Store at -80°C.

**The product is shipped with ice packs. Upon receipt, store it immediately at -80°C**

Storage Buffer:

PBS only, pH7.3

For technical support and original validation data for this product please contact:

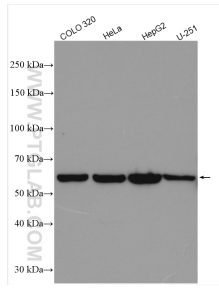
T: 4006900926

E: [Proteintech-CN@ptglab.com](mailto:Proteintech-CN@ptglab.com)

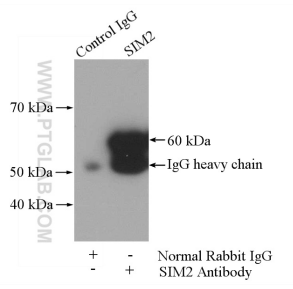
W: [ptgcn.com](http://ptgcn.com)

**This product is exclusively available under Proteintech Group brand and is not available to purchase from any other manufacturer.**

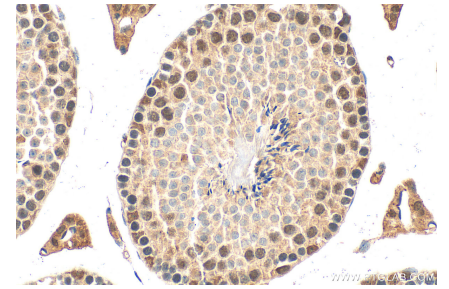
## Selected Validation Data



Various lysates were subjected to SDS PAGE followed by western blot with 21069-1-AP (SIM2 antibody) at dilution of 1:1500 incubated at room temperature for 1.5 hours. This data was developed using the same antibody clone with 21069-1-PBS in a different storage buffer formulation.



IP result of anti-SIM2 (IP:21069-1-AP, 4ug; Detection:21069-1-AP 1:800) with mouse skeletal muscle tissue lysate 2200ug. This data was developed using the same antibody clone with 21069-1-PBS in a different storage buffer formulation.



Immunohistochemical analysis of paraffin-embedded mouse testis tissue slide using 21069-1-AP (SIM2 antibody) at dilution of 1:200 (under 40x lens). Heat mediated antigen retrieval with Tris-EDTA buffer (pH 9.0). This data was developed using the same antibody clone with 21069-1-PBS in a different storage buffer formulation.