

For Research Use Only

SIM2 Polyclonal antibody

Catalog Number: 21069-1-AP **1 Publications**



Basic Information

Catalog Number:

21069-1-AP

Size:

450 µg/ml

Source:

Rabbit

Isotype:

IgG

Immunogen Catalog Number:

AG15204

GenBank Accession Number:

BC110444

GeneID (NCBI):

6493

UNIPROT ID:

Q14190

Full Name:

single-minded homolog 2
(Drosophila)

Calculated MW:

667 aa, 73 kDa

Observed MW:

60-64 kDa

Purification Method:

Antigen affinity purification

Recommended Dilutions:

WB 1:500-1:3000

IP 0.5-4.0 µg for 1.0-3.0 mg of total protein lysate

Applications

Tested Applications:

IP, WB, ELISA

Cited Applications:

ChIP

Species Specificity:

human, mouse

Cited Species:

human

Positive Controls:

WB: COLO 320 cells, human skeletal muscle tissue, HeLa cells, HepG2 cells, U-251 cells

IP: mouse skeletal muscle tissue,

Background Information

SIM2, also named as single-minded homolog 2, is a 667 amino acid protein, which contains 1 bHLH (basic helix-loop-helix) domain and one PAS-associated C-terminal domain. SIM2 localizes in the nucleus and has two isoforms. Isoform SIM2 is a 73 kDa protein and Isoform SIM2S is 63 kDa protein. SIM2 as a transcription factor may be a master gene of CNS development in cooperation with Arnt. It may have pleiotropic effects in the tissues expressed during development.

Notable Publications

Author	Pubmed ID	Journal	Application
Emily Lyn Button	35730699	Biochem J	ChIP

Storage

Storage:

Store at -20°C. Stable for one year after shipment.

Storage Buffer:

PBS with 0.02% sodium azide and 50% glycerol pH 7.3.

Aliquoting is unnecessary for -20°C storage

For technical support and original validation data for this product please contact:

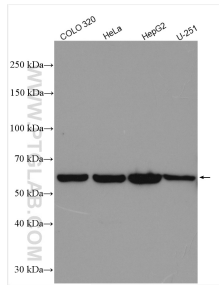
T: 4006900926

E: Proteintech-CN@ptglab.com

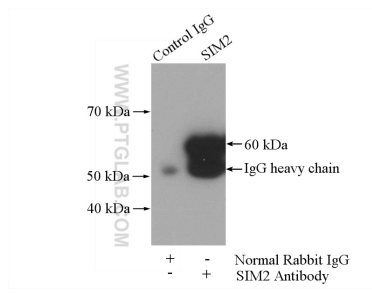
W: ptgcn.com

This product is exclusively available under Proteintech Group brand and is not available to purchase from any other manufacturer.

Selected Validation Data



Various lysates were subjected to SDS PAGE followed by western blot with 21069-1-AP (SIM2 antibody) at dilution of 1:1500 incubated at room temperature for 1.5 hours.



IP result of anti-SIM2 (IP:21069-1-AP, 4ug; Detection:21069-1-AP 1:800) with mouse skeletal muscle tissue lysate 2200ug.