

For Research Use Only

ESRP1 Polyclonal antibody

Catalog Number: 21045-1-AP

Featured Product

8 Publications



Basic Information

Catalog Number:

21045-1-AP

Size:

450 ug/ml

Source:

Rabbit

Isotype:

IgG

Immunogen Catalog Number:

AG15386

GenBank Accession Number:

BC099916

GeneID (NCBI):

54845

UNIPROT ID:

Q6NXG1

Full Name:

epithelial splicing regulatory protein

1

Calculated MW:

681 aa, 76 kDa

Observed MW:

76 kDa

Purification Method:

Antigen affinity purification

Recommended Dilutions:

WB 1:500-1:2000

IP 0.5-4.0 ug for 1.0-3.0 mg of total protein lysate

IHC 1:250-1:1000

Applications

Tested Applications:

WB, IHC, IP, ELISA

Cited Applications:

WB, IF, RIP

Species Specificity:

human, mouse

Cited Species:

human

Note-IHC: suggested antigen retrieval with TE buffer pH 9.0; (*) Alternatively, antigen retrieval may be performed with citrate buffer pH 6.0

Positive Controls:

WB: COLO 320 cells, mouse lung tissue, MCF-7 cells

IP: COLO 320 cells,

IHC: human lung tissue, mouse colon tissue, human bowen disease

Background Information

ESRP1, also named as Epithelial splicing regulatory protein 1, is a 681 amino acid protein, which belongs to the ESRP family. ESRP1 as a mRNA splicing factor that regulates the formation of epithelial cell-specific isoforms. ESRP1 specifically regulates the expression of FGFR2-IIIb, an epithelial cell-specific isoform of FGFR2 and also regulates the splicing of CD44, CTNND1, ENAH, 3 transcripts that undergo changes in splicing during the epithelial-to-mesenchymal transition (EMT). ESRP1 exists various isoforms and molecular weight of each isoform is 76 kDa, 67 kDa, and 73 kDa.

Notable Publications

Author	Pubmed ID	Journal	Application
Wei Zhao	31570856	Cell Death Differ	WB
Christina R Adams	31134896	Elife	WB
Shuo Chen	33483472	Cell Death Discov	WB

Storage

Storage:

Store at -20°C. Stable for one year after shipment.

Storage Buffer:

PBS with 0.02% sodium azide and 50% glycerol pH 7.3.

Aliquoting is unnecessary for -20°C storage

For technical support and original validation data for this product please contact:

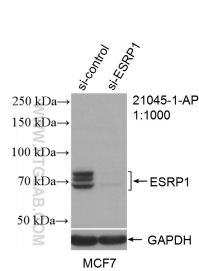
T: 4006900926

E: Proteintech-CN@ptglab.com

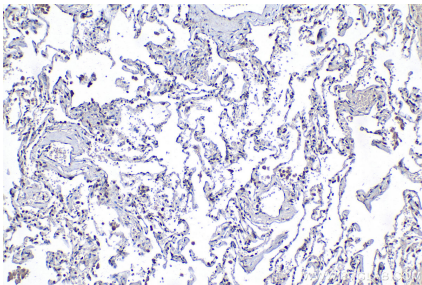
W: ptgcn.com

This product is exclusively available under Proteintech Group brand and is not available to purchase from any other manufacturer.

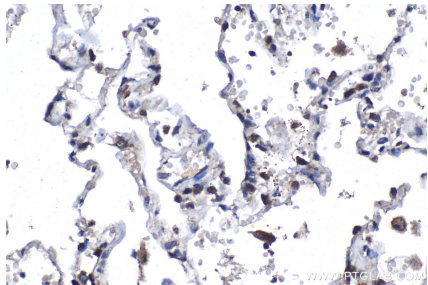
Selected Validation Data



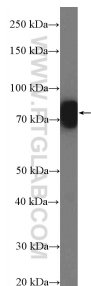
WB result of ESRP1 antibody (21045-1-AP; 1:1000; incubated at room temperature for 1.5 hours) with sh-Control and sh-ESRP1 transfected MCF-7 cells.



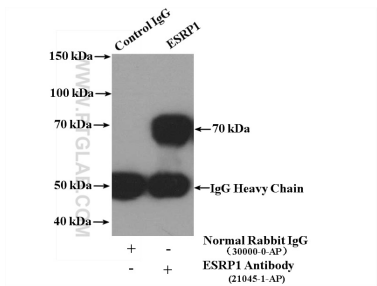
Immunohistochemical analysis of paraffin-embedded human lung tissue slide using 21045-1-AP (ESRP1 antibody) at dilution of 1:500 (under 10x lens). Heat mediated antigen retrieval with Tris-EDTA buffer (pH 9.0).



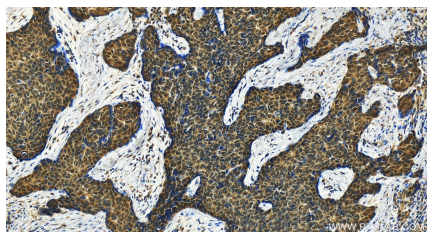
Immunohistochemical analysis of paraffin-embedded human lung tissue slide using 21045-1-AP (ESRP1 antibody) at dilution of 1:500 (under 40x lens). Heat mediated antigen retrieval with Tris-EDTA buffer (pH 9.0).



COLO 320 cells were subjected to SDS PAGE followed by western blot with 21045-1-AP (ESRP1 Antibody) at dilution of 1:1000 incubated at room temperature for 1.5 hours.



IP result of anti-ESRP1 (IP:21045-1-AP, 4ug; Detection:21045-1-AP 1:300) with COLO 320 cells lysate 4000ug.



Immunohistochemical analysis of paraffin-embedded human bown disease slide using 21045-1-AP (ESRP1 antibody) at dilution of 1:200 (under 20x lens). Heat mediated antigen retrieval with Tris-EDTA buffer (pH 9.0).