

For Research Use Only

CLEC18A Polyclonal antibody, PBS Only

Catalog Number: 21013-1-PBS



Basic Information

| | | |
|---|--|--|
| Catalog Number: 21013-1-PBS | GenBank Accession Number: BC141808 | Purification Method: Antigen affinity purification |
| Size: 1 mg/ml | GeneID (NCBI): 348174 | |
| Source: Rabbit | UNIPROT ID: A5D8T8 | |
| Isotype: IgG | Full Name: C-type lectin domain family 18, member A | |
| Immunogen Catalog Number: AG15237 | Calculated MW: 446 aa, 50 kDa | |
| | Observed MW: 47-50 kDa | |

Applications

Tested Applications:
WB, IHC, Indirect ELISA

Species Specificity:
human, mouse, rat

Background Information

CLEC18A, or C-type lectin member 18A, is a protein that plays a significant role in the human immune system, particularly in the context of viral infections. CLEC18A is widely expressed, with the highest levels found in myeloid cells and the liver. It is a co-receptor for TLR3 (Toll-like receptor 3) and is involved in enhancing the host's immune response to viral infections, such as H5N1 influenza A virus (IAV). CLEC18A has been implicated in the development of mixed cryoglobulinemia (MC), an extrahepatic manifestation associated with hepatitis C virus (HCV). This antibody can recognize CLEC18A/B/C.

Storage

Storage:
Store at -80°C.
The product is shipped with ice packs. Upon receipt, store it immediately at -80°C

Storage Buffer:
PBS Only

For technical support and original validation data for this product please contact:

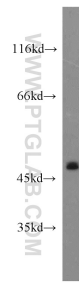
T: 4006900926

E: Proteintech-CN@ptglab.com

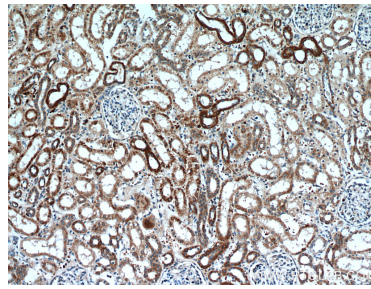
W: ptgcn.com

This product is exclusively available under Proteintech Group brand and is not available to purchase from any other manufacturer.

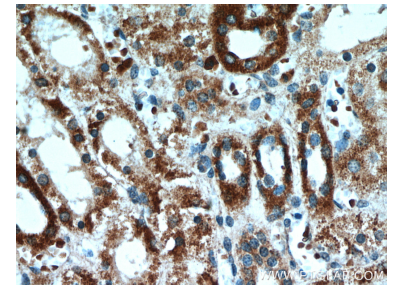
Selected Validation Data



HeLa cells were subjected to SDS PAGE followed by western blot with 21013-1-AP (CLEC18A antibody) at dilution of 1:500 incubated at room temperature for 1.5 hours. This data was developed using the same antibody clone with 21013-1-PBS in a different storage buffer formulation.



Immunohistochemical analysis of paraffin-embedded human kidney using 21013-1-AP (CLEC18A antibody) at dilution of 1:50 (under 10x lens). This data was developed using the same antibody clone with 21013-1-PBS in a different storage buffer formulation.



Immunohistochemical analysis of paraffin-embedded human kidney using 21013-1-AP (CLEC18A antibody) at dilution of 1:50 (under 40x lens). This data was developed using the same antibody clone with 21013-1-PBS in a different storage buffer formulation.