

For Research Use Only

CLEC18A Polyclonal antibody

Catalog Number: 21013-1-AP



Basic Information

Catalog Number:

21013-1-AP

Size:

400 ug/ml

Source:

Rabbit

Isotype:

IgG

Immunogen Catalog Number:

AG15237

GenBank Accession Number:

BC141808

GeneID (NCBI):

348174

UNIPROT ID:

A5D8T8

Full Name:

C-type lectin domain family 18,
member A

Calculated MW:

446 aa, 50 kDa

Observed MW:

47-50 kDa

Purification Method:

Antigen affinity purification

Recommended Dilutions:

WB 1:500-1:1000

IHC 1:20-1:200

Applications

Tested Applications:

WB, IHC, ELISA

Species Specificity:

human, mouse, rat

Positive Controls:

WB : HeLa cells,

IHC : human kidney tissue, human stomach tissue

**Note-IHC: suggested antigen retrieval with
TE buffer pH 9.0; (*) Alternatively, antigen
retrieval may be performed with citrate
buffer pH 6.0**

Background Information

CLEC18A, or C-type lectin member 18A, is a protein that plays a significant role in the human immune system, particularly in the context of viral infections. CLEC18A is widely expressed, with the highest levels found in myeloid cells and the liver. It is a co-receptor for TLR3 (Toll-like receptor 3) and is involved in enhancing the host's immune response to viral infections, such as H5N1 influenza A virus (IAV). CLEC18A has been implicated in the development of mixed cryoglobulinemia (MC), an extrahepatic manifestation associated with hepatitis C virus (HCV). This antibody can recognize CLEC18A/B/C.

Storage

Storage:

Store at -20°C. Stable for one year after shipment.

Storage Buffer:

PBS with 0.02% sodium azide and 50% glycerol pH 7.3.

Aliquoting is unnecessary for -20°C storage

For technical support and original validation data for this product please contact:

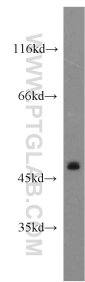
T: 4006900926

E: Proteintech-CN@ptglab.com

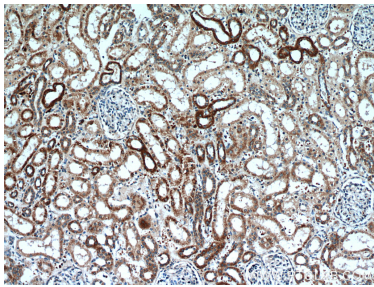
W: ptgcn.com

This product is exclusively available under Proteintech Group brand and is not available to purchase from any other manufacturer.

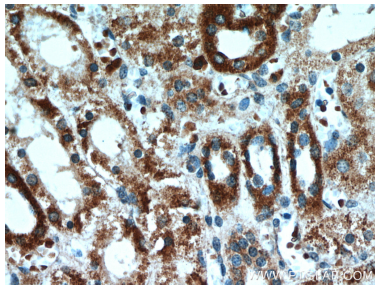
Selected Validation Data



HeLa cells were subjected to SDS PAGE followed by western blot with 21013-1-AP (CLEC18A antibody) at dilution of 1:500 incubated at room temperature for 1.5 hours.



Immunohistochemical analysis of paraffin-embedded human kidney using 21013-1-AP (CLEC18A antibody) at dilution of 1:50 (under 10x lens).



Immunohistochemical analysis of paraffin-embedded human kidney using 21013-1-AP (CLEC18A antibody) at dilution of 1:50 (under 40x lens).