

ENTPD8 Polyclonal antibody

Catalog Number: 21010-1-AP

Basic Information

Catalog Number:

21010-1-AP

Size:

450 µg/ml

Source:

Rabbit

Isotype:

IgG

Immunogen Catalog Number:

AG15224

GenBank Accession Number:

BC141810

GeneID (NCBI):

377841

UNIPROT ID:

Q5MY95

Full Name:ectonucleoside triphosphate
diphosphohydrolase 8**Calculated MW:**

495 aa, 54 kDa

Observed MW:

70 kDa, 54 kDa

Purification Method:

Antigen affinity purification

Recommended Dilutions:

WB 1:500-1:1000

Applications

Tested Applications:

WB, ELISA

Species Specificity:

human, rat, mouse

Positive Controls:WB : 37°C incubated HepG2 cells, mouse liver tissue,
rat liver tissue

Background Information

ENTPD8 (Ectonucleoside triphosphate diphosphohydrolase 8) is also named as E-NTPDase 8, NTPDase8 and belongs to the GDA1/CD39 NTPase family. NTPDase8 is the canalicular ecto-ATPase/ATPDase and is responsible for the main hepatic NTP-Dase activity (PMID:17095758). The estimated molecular mass of expressed human ENTDP8 is 70-85 kDa which is N-glycosylated and after deglycosylation, it has a nearly identical molecular mass, 54 kDa (PMID:16752921;7781224). It has 2 isoforms produced by alternative splicing with the molecular weight of 54 kDa and 49 kDa. This antibody is specific to ENTDP8.

Storage

Storage:

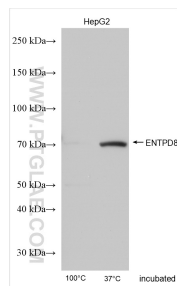
Store at -20°C. Stable for one year after shipment.

Storage Buffer:

PBS with 0.02% sodium azide and 50% glycerol pH 7.3.

Aliquoting is unnecessary for -20°C storage

Selected Validation Data



Various lysates were subjected to SDS PAGE followed by western blot with 21010-1-AP (ENTPD8 antibody) at dilution of 1:500 incubated at room temperature for 1.5 hours.