

For Research Use Only

BZW2 Polyclonal antibody

Catalog Number: 21001-1-AP

Featured Product

2 Publications



Basic Information

Catalog Number:

21001-1-AP

Size:

400 µg/ml

Source:

Rabbit

Isotype:

IgG

Immunogen Catalog Number:

AG15126

GenBank Accession Number:

BC003056

GeneID (NCBI):

28969

UNIPROT ID:

Q9Y6E2

Full Name:

basic leucine zipper and W2 domains

2

Calculated MW:

419 aa, 48 kDa

Observed MW:

45-48 kDa

Purification Method:

Antigen affinity purification

Recommended Dilutions:

WB 1:500-1:2000

Applications

Tested Applications:

WB, ELISA

Cited Applications:

WB, IHC

Species Specificity:

human

Cited Species:

human

Positive Controls:

WB : HeLa cells,

Background Information

Notable Publications

Author	Pubmed ID	Journal	Application
Ya-Qin Wang	36608137	Sci Adv	WB, IHC
Dong-Dong Cheng	28791373	Oncol Rep	

Storage

Storage:

Store at -20°C. Stable for one year after shipment.

Storage Buffer:

PBS with 0.02% sodium azide and 50% glycerol pH 7.3.

Aliquoting is unnecessary for -20°C storage

For technical support and original validation data for this product please contact:

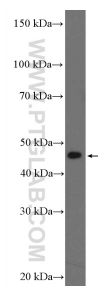
T: 4006900926

E: Proteintech-CN@ptglab.com

W: ptgcn.com

This product is exclusively available under Proteintech Group brand and is not available to purchase from any other manufacturer.

Selected Validation Data



HeLa cells were subjected to SDS PAGE followed by western blot with 21001-1-AP (BZW2 Antibody) at dilution of 1:1000 incubated at room temperature for 1.5 hours.