

For Research Use Only

INSC Polyclonal antibody, PBS Only

Catalog Number: 20973-1-PBS



Basic Information

Catalog Number:

20973-1-PBS

Source:

Rabbit

Isotype:

IgG

GenBank Accession Number:

NM_001031853

GeneID (NCBI):

387755

UNIPROT ID:

Q1MX18

Full Name:

inscuteable homolog (Drosophila)

Calculated MW:

63 kDa

Observed MW:

54 kDa

Purification Method:

Antigen affinity purification

Applications

Tested Applications:

WB, IHC, IF/ICC, Indirect ELISA

Species Specificity:

human, mouse, rat

Background Information

INSC may function as an adapter linking the Par3 complex to the GPSM1/GPSM2 complex. It is involved in spindle orientation during mitosis it may regulate cell proliferation and differentiation in the developing nervous system. INSC may play a role in the asymmetric division of fibroblasts and participate in the process of stratification of the squamous epithelium. The antibody can recognize isoform1, 2,4,5 of INSC.

Storage

Storage:

Store at -80°C.

The product is shipped with ice packs. Upon receipt, store it immediately at -80°C

Storage Buffer:

PBS only, pH7.3

For technical support and original validation data for this product please contact:

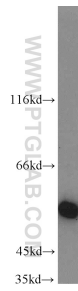
T: 4006900926

E: Proteintech-CN@ptglab.com

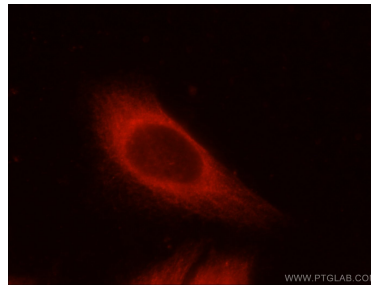
W: ptgcn.com

This product is exclusively available under Proteintech Group brand and is not available to purchase from any other manufacturer.

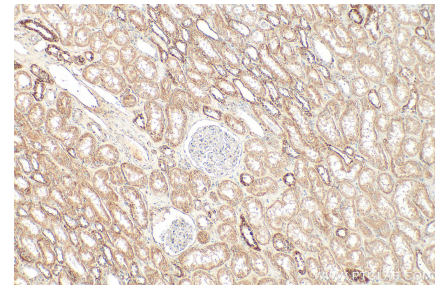
Selected Validation Data



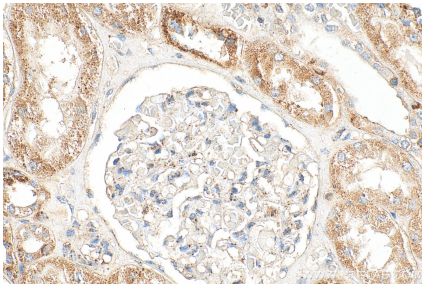
mouse liver tissue were subjected to SDS PAGE followed by western blot with 20973-1-AP (INSC antibody) at dilution of 1:1000 incubated at room temperature for 1.5 hours. This data was developed using the same antibody clone with 20973-1-PBS in a different storage buffer formulation.



Immunofluorescent analysis of HeLa cells using 20973-1-AP (INSC antibody) at dilution of 1:25 and Rhodamine-Goat anti-Rabbit IgG. This data was developed using the same antibody clone with 20973-1-PBS in a different storage buffer formulation.



Immunohistochemical analysis of paraffin-embedded human kidney tissue slide using 20973-1-AP (INSC antibody) at dilution of 1:200 (under 10x lens). Heat mediated antigen retrieval with Tris-EDTA buffer (pH 9.0). This data was developed using the same antibody clone with 20973-1-PBS in a different storage buffer formulation.



Immunohistochemical analysis of paraffin-embedded human kidney tissue slide using 20973-1-AP (INSC antibody) at dilution of 1:200 (under 40x lens). Heat mediated antigen retrieval with Tris-EDTA buffer (pH 9.0). This data was developed using the same antibody clone with 20973-1-PBS in a different storage buffer formulation.