

For Research Use Only

ABHD14B Polyclonal antibody, PBS Only

Catalog Number: 20952-1-PBS



Basic Information

Catalog Number:

20952-1-PBS

Source:

Rabbit

Isotype:

IgG

Immunogen Catalog Number:

AG15097

GenBank Accession Number:

BC007234

GeneID (NCBI):

84836

UNIPROT ID:

Q96IU4

Full Name:

abhydrolase domain containing 14B

Calculated MW:

210 aa, 22 kDa

Observed MW:

22-25 kDa

Purification Method:

Antigen affinity purification

Applications

Tested Applications:

WB, IHC, IF/ICC, Indirect ELISA

Species Specificity:

human, mouse, rat

Background Information

ABHD14B possessed the canonical ABHD fold, an invariant catalytic triad (Ser-His-Asp), and based on its protein sequence, was subsequently categorized as an outlying member of the metabolic serine hydrolase family. ABHD14B was able to transfer an acetyl group from post translationally modified protein lysine residue to coenzyme-A (CoA), thus making the biologically important acetyl-CoA.

Storage

Storage:

Store at -80°C.

The product is shipped with ice packs. Upon receipt, store it immediately at -80°C

Storage Buffer:

PBS only, pH7.3

For technical support and original validation data for this product please contact:

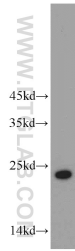
T: 4006900926

E: Proteintech-CN@ptglab.com

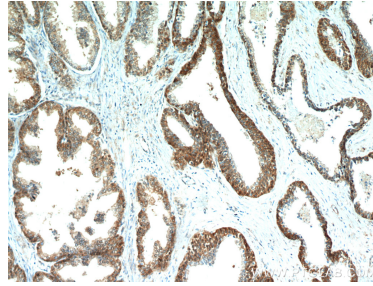
W: ptgcn.com

This product is exclusively available under Proteintech Group brand and is not available to purchase from any other manufacturer.

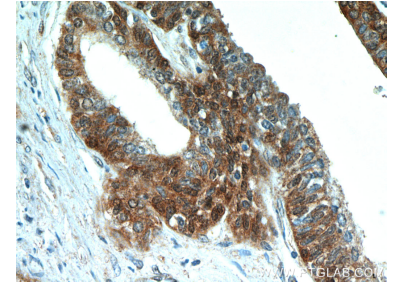
Selected Validation Data



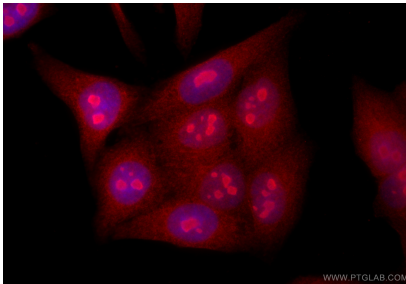
L02 cells were subjected to SDS PAGE followed by western blot with 20952-1-AP (ABHD14B antibody) at dilution of 1:400 incubated at room temperature for 1.5 hours. This data was developed using the same antibody clone with 20952-1-PBS in a different storage buffer formulation.



Immunohistochemical analysis of paraffin-embedded human prostate hyperplasia using 20952-1-AP (ABHD14B antibody) at dilution of 1:50 (under 10x lens). This data was developed using the same antibody clone with 20952-1-PBS in a different storage buffer formulation.



Immunohistochemical analysis of paraffin-embedded human prostate hyperplasia using 20952-1-AP (ABHD14B antibody) at dilution of 1:50 (under 40x lens). This data was developed using the same antibody clone with 20952-1-PBS in a different storage buffer formulation.



Immunofluorescent analysis of (4% PFA) fixed HepG2 cells using ABHD14B antibody (20952-1-AP) at dilution of 1:200 and CoraLite®594-Conjugated Goat Anti-Rabbit IgG(H+L) (SA00013-4). This data was developed using the same antibody clone with 20952-1-PBS in a different storage buffer formulation.