

For Research Use Only

FBXL20 Polyclonal antibody

Catalog Number: 20949-1-AP



Basic Information

Catalog Number: 20949-1-AP	GenBank Accession Number: BC007557	Purification Method: Antigen affinity purification
Source: Rabbit	GeneID (NCBI): 84961	Recommended Dilutions: WB: 1:1000-1:4000 IF/ICC: 1:200-1:800
Isotype: IgG	UNIPROT ID: Q96IG2	
Immunogen Catalog Number: AG15071	Full Name: F-box and leucine-rich repeat protein 20	
	Calculated MW: 436 aa, 48 kDa	
	Observed MW: 48 kDa	

Applications

Tested Applications: WB, IF/ICC, ELISA	Positive Controls:
Species Specificity: human	WB : MCF-7 cells, IF/ICC : MCF-7 cells,

Background Information

FBXL20 (F-box and leucine-rich repeat protein 20) is a member of the F-box protein family, which plays a crucial role in the ubiquitin-proteasome system. FBXL20 acts as a substrate recognition component of the SCF (Skp1-Cul1-F-box) ubiquitin ligase complex, targeting specific proteins for ubiquitination and subsequent degradation. This protein is involved in cell cycle regulation, signal transduction, and maintenance of protein homeostasis. Abnormal expression of FBXL20 has been implicated in various diseases, including cancer and neurodegenerative disorders. Research also suggests that FBXL20 may regulate the degradation of 4-1BB, an important immune stimulator, through ubiquitination. (PMID: 25593308, PMID: 27502938, PMID: 35112462)

Storage

Storage:
Store at -20°C. Stable for one year after shipment.
Storage Buffer:
PBS with 0.02% sodium azide and 50% glycerol, pH7.3
Aliquoting is unnecessary for -20°C storage

For technical support and original validation data for this product please contact:

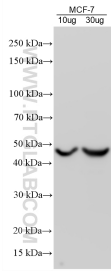
T: 4006900926

E: Proteintech-CN@ptglab.com

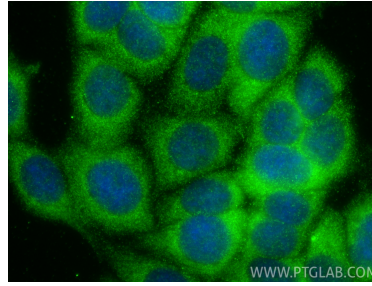
W: ptgcn.com

This product is exclusively available under Proteintech Group brand and is not available to purchase from any other manufacturer.

Selected Validation Data



MCF-7 cells were subjected to SDS PAGE followed by western blot with 20949-1-AP (FBXL20 antibody) at dilution of 1:2000 incubated at room temperature for 1.5 hours.



Immunofluorescent analysis of (-20°C Methanol) fixed MCF-7 cells using FBXL20 antibody (20949-1-AP) at dilution of 1:400 and CoraLite® 488-Conjugated Goat Anti-Rabbit IgG(H+L) (SA00013-2).