

For Research Use Only

# LAMC1 Polyclonal antibody

Catalog Number: 20928-1-AP

Featured Product



## Basic Information

Catalog Number:

20928-1-AP

Concentration:

300 ug/ml

Source:

Rabbit

Isotype:

IgG

Immunogen Catalog Number:

AG14674

GenBank Accession Number:

BC015586

GeneID (NCBI):

3915

UNIPROT ID:

P11047

Full Name:

laminin, gamma 1 (formerly LAMB2)

Calculated MW:

178 kDa

Observed MW:

220 kDa, 178 kDa

Purification Method:

Antigen affinity purification

Recommended Dilutions:

WB: 1:500-1:1000

IP: 0.5-4.0 ug for 1.0-3.0 mg of total protein lysate

## Applications

Tested Applications:

WB, IP, ELISA

Species Specificity:

human

Positive Controls:

WB : DU 145 cells, HeLa cells

IP : DU 145 cells,

## Background Information

### Storage

Storage:

Store at -20°C. Stable for one year after shipment.

Storage Buffer:

PBS with 0.02% sodium azide and 50% glycerol, pH7.3

Aliquoting is unnecessary for -20°C storage

For technical support and original validation data for this product please contact:

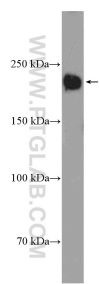
T: 4006900926

E: [Proteintech-CN@ptglab.com](mailto:Proteintech-CN@ptglab.com)

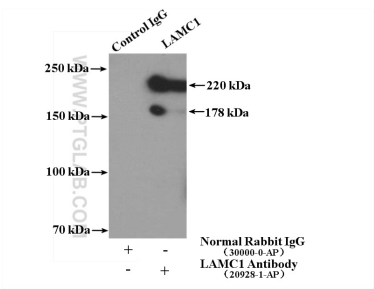
W: [ptgcn.com](http://ptgcn.com)

This product is exclusively available under Proteintech Group brand and is not available to purchase from any other manufacturer.

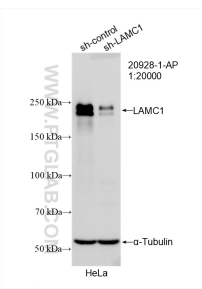
Selected Validation Data



DU 145 cells were subjected to SDS PAGE followed by western blot with 20928-1-AP (LAMC1 Antibody) at dilution of 1:600 incubated at room temperature for 1.5 hours.



IP result of anti-LAMC1 (IP:20928-1-AP, 4ug; Detection:20928-1-AP 1:1000) with DU 145 cells lysate 3600ug.



WB result of LAMC1 antibody (20928-1-AP; 1:20000; incubated at room temperature for 1.5 hours) with sh-Control and sh-LAMC1 transfected HeLa cells.