

For Research Use Only

C7orf58 Polyclonal antibody

Catalog Number: 20924-1-AP

1 Publications



Basic Information

Catalog Number: 20924-1-AP	GenBank Accession Number: BC030538	Purification Method: Antigen affinity purification
Size: 400 ug/ml	GeneID (NCBI): 79974	Recommended Dilutions: WB 1:500-1:3000
Source: Rabbit	UNIPROT ID: A4DOV7	IHC 1:20-1:200
Isotype: IgG	Full Name: chromosome 7 open reading frame 58	IF/ICC 1:200-1:800
Immunogen Catalog Number: AG15193	Calculated MW: 1026 aa, 117 kDa	
	Observed MW: 89 kDa	

Applications

Tested Applications: WB, IHC, IF/ICC, ELISA	Positive Controls:
Cited Applications: WB	WB : A375 cells, A431 cells, HEK-293 cells, HeLa cells, L02 cells
Species Specificity: human	IHC : human stomach tissue,
Cited Species: human	IF/ICC : A375 cells,

Note-IHC: suggested antigen retrieval with **TE buffer pH 9.0**; (*) Alternatively, antigen retrieval may be performed with **citrate buffer pH 6.0**

Background Information

Notable Publications

Author	Pubmed ID	Journal	Application
Siwei Pan	37771777	Theranostics	WB

Storage

Storage:
Store at -20°C. Stable for one year after shipment.
Storage Buffer:
PBS with 0.02% sodium azide and 50% glycerol pH 7.3.
Aliquoting is unnecessary for -20°C storage

For technical support and original validation data for this product please contact:

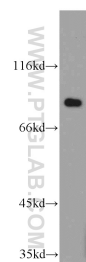
T: 4006900926

E: Proteintech-CN@ptglab.com

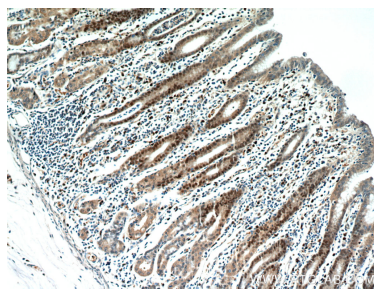
W: ptgcn.com

This product is exclusively available under Proteintech Group brand and is not available to purchase from any other manufacturer.

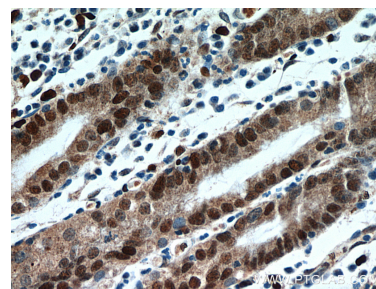
Selected Validation Data



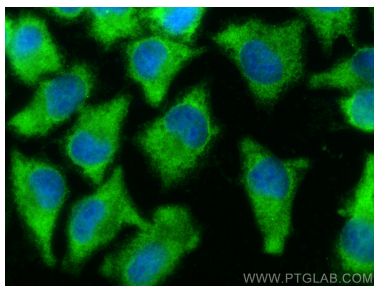
A375 cells were subjected to SDS PAGE followed by western blot with 20924-1-AP (C7orf58 antibody) at dilution of 1:500 incubated at room temperature for 1.5 hours.



Immunohistochemical analysis of paraffin-embedded human stomach using 20924-1-AP (C7orf58 antibody) at dilution of 1:100 (under 10x lens).



Immunohistochemical analysis of paraffin-embedded human stomach using 20924-1-AP (C7orf58 antibody) at dilution of 1:100 (under 40x lens).



Immunofluorescent analysis of (-20°C Ethanol) fixed A375 cells using C7orf58 antibody (20924-1-AP) at dilution of 1:400 and CoraLite®488-Conjugated Goat Anti-Rabbit IgG(H+L) (SA00013-2).