

For Research Use Only

C3orf21 Polyclonal antibody, PBS Only

Catalog Number: 20913-1-PBS



Basic Information

Catalog Number: 20913-1-PBS	GenBank Accession Number: BC039067	Purification Method: Antigen affinity purification
Concentration: 1 mg/ml	GeneID (NCBI): 152002	
Source: Rabbit	UNIPROT ID: Q8NBI6	
Isotype: IgG	Full Name: chromosome 3 open reading frame 21	
Immunogen Catalog Number: AG15043	Calculated MW: 393 aa, 44 kDa	
	Observed MW: 44 kDa	

Applications

Tested Applications:
WB, IHC, IF/ICC, Indirect ELISA

Species Specificity:
human, mouse, rat

Background Information

Storage

Storage:
Store at -80°C.
The product is shipped with ice packs. Upon receipt, store it immediately at -80°C

Storage Buffer:
PBS only, pH7.3

For technical support and original validation data for this product please contact:

T: 4006900926

E: Proteintech-CN@ptglab.com

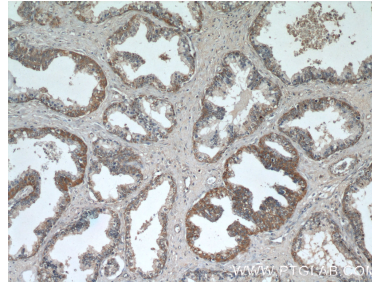
W: ptgcn.com

This product is exclusively available under Proteintech Group brand and is not available to purchase from any other manufacturer.

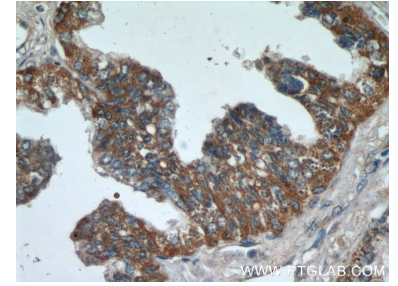
Selected Validation Data



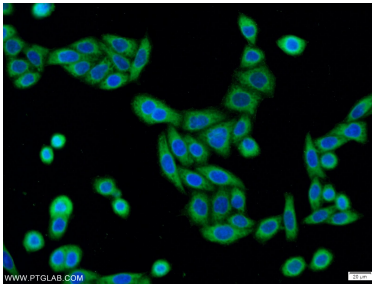
HeLa cells were subjected to SDS PAGE followed by western blot with 20913-1-AP (C3orf21 antibody) at dilution of 1:800 incubated at room temperature for 1.5 hours. This data was developed using the same antibody clone with 20913-1-PBS in a different storage buffer formulation.



Immunohistochemical analysis of paraffin-embedded human prostate hyperplasia using 20913-1-AP (C3orf21 antibody) at dilution of 1:50 (under 10x lens). This data was developed using the same antibody clone with 20913-1-PBS in a different storage buffer formulation.



Immunohistochemical analysis of paraffin-embedded human prostate hyperplasia using 20913-1-AP (C3orf21 antibody) at dilution of 1:50 (under 40x lens). This data was developed using the same antibody clone with 20913-1-PBS in a different storage buffer formulation.



Immunofluorescent analysis of HeLa cells using 20913-1-AP (C3orf21 antibody) at dilution of 1:50 and Alexa Fluor 488-conjugated AffiniPure Goat Anti-Rabbit IgG(H+L). This data was developed using the same antibody clone with 20913-1-PBS in a different storage buffer formulation.