

C3orf20 Polyclonal antibody

Catalog Number: 20906-1-AP

Basic Information

Catalog Number:

20906-1-AP

Concentration:

200 ug/ml

Source:

Rabbit

Isotype:

IgG

Immunogen Catalog Number:

AG15031

GenBank Accession Number:

BC038406

GeneID (NCBI):

84077

UNIPROT ID:

Q8ND61

Full Name:

chromosome 3 open reading frame 20

Calculated MW:

904 aa, 101 kDa

Observed MW:

101 kDa, 88 kDa

Purification Method:

Antigen affinity purification

Recommended Dilutions:

WB 1:500-1:1000

IP 0.5-4.0 ug for 1.0-3.0 mg of total protein lysate

IHC 1:50-1:500

Applications

Tested Applications:

WB, IHC, IP, ELISA

Species Specificity:

human, mouse

Note-IHC: suggested antigen retrieval with TE buffer pH 9.0; (*) Alternatively, antigen retrieval may be performed with citrate buffer pH 6.0

Positive Controls:

WB : human brain tissue, mouse brain tissue

IP : mouse brain tissue,

IHC : human liver tissue,

Background Information

The function of C3orf20 has not been widely studied, and is yet to be fully elucidated. Two isoforms were produced by alternative splicing with predicted MW of 88 and 101 kDa according to UniProt. Catalog#20906-1-AP can recognize both 88 and 101 kDa isoforms.

Storage

Storage:

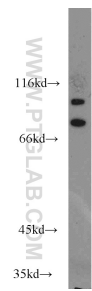
Store at -20°C. Stable for one year after shipment.

Storage Buffer:

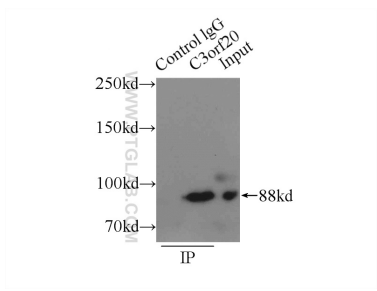
PBS with 0.02% sodium azide and 50% glycerol pH 7.3.

Aliquoting is unnecessary for -20°C storage

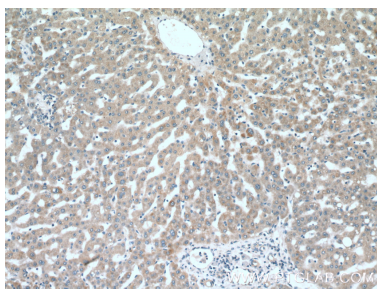
Selected Validation Data



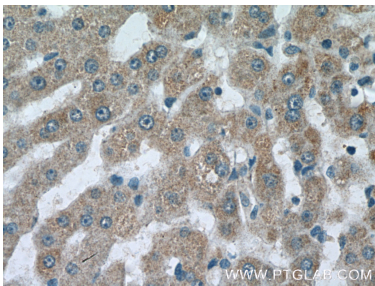
human brain tissue were subjected to SDS PAGE followed by western blot with 20906-1-AP (C3orf20 antibody) at dilution of 1:500 incubated at room temperature for 1.5 hours.



IP result of anti-C3orf20 (IP:20906-1-AP, 3ug; Detection:20906-1-AP 1:500) with mouse brain tissue lysate 10000ug.



Immunohistochemical analysis of paraffin-embedded human liver tissue slide using 20906-1-AP (C3orf20 Antibody) at dilution of 1:200 (under 10x lens).



Immunohistochemical analysis of paraffin-embedded human liver tissue slide using 20906-1-AP (C3orf20 Antibody) at dilution of 1:200 (under 40x lens).