

For Research Use Only

METTL17 Polyclonal antibody, PBS Only

Catalog Number: 20890-1-PBS



Basic Information

Catalog Number:

20890-1-PBS

Source:

Rabbit

Isotype:

IgG

Immunogen Catalog Number:

AG14518

GenBank Accession Number:

BC005053

GeneID (NCBI):

64745

UNIPROT ID:

Q9H7H0

Full Name:

methyltransferase 11 domain
containing 1

Calculated MW:

478 aa, 53 kDa

Purification Method:

Antigen affinity purification

Applications

Tested Applications:

IHC, Indirect ELISA

Species Specificity:

human, mouse

Background Information

METTL17 is located in mitochondria through its N-terminal targeting sequence and specifically interacts with 12S mitochondrial ribosomal RNA (mt-rRNA) as well as small subunits of mitochondrial ribosome (MSSUs). METTL17, a regulator of mitochondrial ribosomal RNA modifications, is required for the translation of mitochondrial coding genes. (PMID: 38377789, PMID: 31487196)

Storage

Storage:

Store at -80°C.

The product is shipped with ice packs. Upon receipt, store it immediately at -80°C

Storage Buffer:

PBS only, pH7.3

For technical support and original validation data for this product please contact:

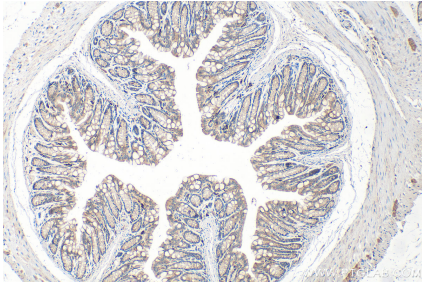
T: 4006900926

E: Proteintech-CN@ptglab.com

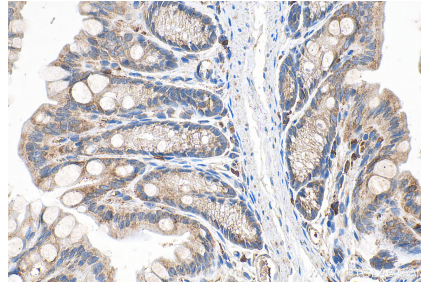
W: ptgcn.com

This product is exclusively available under Proteintech Group brand and is not available to purchase from any other manufacturer.

Selected Validation Data



Immunohistochemical analysis of paraffin-embedded mouse colon tissue slide using 20890-1-AP (METT11D1 antibody) at dilution of 1:200 (under 10x lens). Heat mediated antigen retrieval with Tris-EDTA buffer (pH 9.0). This data was developed using the same antibody clone with 20890-1-PBS in a different storage buffer formulation.



Immunohistochemical analysis of paraffin-embedded mouse colon tissue slide using 20890-1-AP (METT11D1 antibody) at dilution of 1:200 (under 40x lens). Heat mediated antigen retrieval with Tris-EDTA buffer (pH 9.0). This data was developed using the same antibody clone with 20890-1-PBS in a different storage buffer formulation.