

For Research Use Only

# SDF2L1 Polyclonal antibody

Catalog Number: 20888-1-AP

1 Publications



## Basic Information

Catalog Number:

20888-1-AP

Size:

600 µg/ml

Source:

Rabbit

Isotype:

IgG

Immunogen Catalog Number:

AG14160

GenBank Accession Number:

BC006248

GeneID (NCBI):

23753

UNIPROT ID:

Q9HCN8

Full Name:

stromal cell-derived factor 2-like 1

Calculated MW:

221 aa, 24 kDa

Observed MW:

24 kDa

Purification Method:

Antigen affinity purification

Recommended Dilutions:

WB 1:1000-1:4000

IHC 1:20-1:200

## Applications

Tested Applications:

IHC, WB, ELISA

Cited Applications:

IHC

Species Specificity:

human, mouse, rat

Cited Species:

human

**Note-IHC: suggested antigen retrieval with TE buffer pH 9.0; (\*) Alternatively, antigen retrieval may be performed with citrate buffer pH 6.0**

Positive Controls:

WB : mouse pancreas tissue, rat pancreas tissue, mouse testis tissue, rat testis tissue

IHC : human testis tissue, human pancreas tissue, human small intestine tissue

## Background Information

### Notable Publications

Author	Pubmed ID	Journal	Application
Ming-Ying Ling	36326546	Arch Biochem Biophys	IHC

## Storage

Storage:

Store at -20°C. Stable for one year after shipment.

Storage Buffer:

PBS with 0.02% sodium azide and 50% glycerol pH 7.3.

Aliquoting is unnecessary for -20°C storage

For technical support and original validation data for this product please contact:

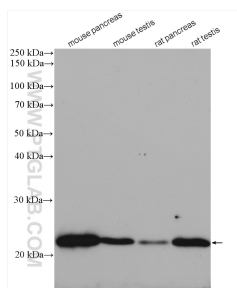
T: 4006900926

E: [Proteintech-CN@ptglab.com](mailto:Proteintech-CN@ptglab.com)

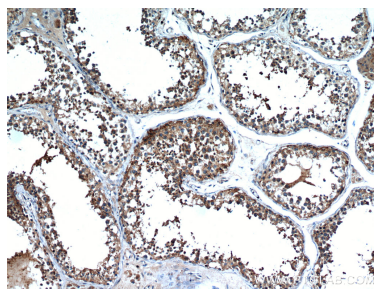
W: [ptgcn.com](http://ptgcn.com)

This product is exclusively available under Proteintech Group brand and is not available to purchase from any other manufacturer.

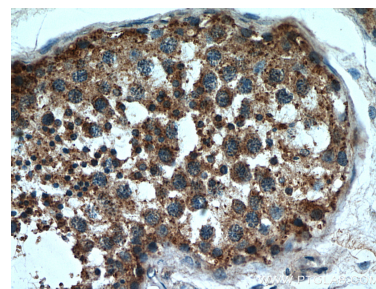
## Selected Validation Data



Various lysates were subjected to SDS PAGE followed by western blot with 20888-1-AP (SDF2L1 antibody) at dilution of 1:2000 incubated at room temperature for 1.5 hours.



Immunohistochemical analysis of paraffin-embedded human testis using 20888-1-AP (SDF2L1 antibody) at dilution of 1:50 (under 10x lens).



Immunohistochemical analysis of paraffin-embedded human testis using 20888-1-AP (SDF2L1 antibody) at dilution of 1:50 (under 40x lens).