

For Research Use Only

Caldesmon Polyclonal antibody

Catalog Number: 20887-1-AP

Featured Product

9 Publications



Basic Information

Catalog Number:

20887-1-AP

Size:

550 ug/ml

Source:

Rabbit

Isotype:

IgG

Immunogen Catalog Number:

AG13676

GenBank Accession Number:

BC040354

GeneID (NCBI):

800

UNIPROT ID:

Q05682

Full Name:

caldesmon 1

Calculated MW:

538 aa, 63 kDa

Observed MW:

70-80 kDa

Purification Method:

Antigen affinity purification

Recommended Dilutions:

WB 1:5000-1:50000

IHC 1:1000-1:4000

IF-P 1:50-1:500

IF/ICC 1:200-1:800

Applications

Tested Applications:

WB, IHC, IF/ICC, IF-P, FC (Intra), ELISA

Cited Applications:

WB, IHC, IF

Species Specificity:

human, mouse

Cited Species:

human, mouse

Note-IHC: suggested antigen retrieval with TE buffer pH 9.0; (*) Alternatively, antigen retrieval may be performed with citrate buffer pH 6.0

Positive Controls:

WB : A2780 cells, HeLa cells, HT-1080 cells, MDA-MB-231 cells, PC-3 cells, SKOV-3 cells

IHC : human colon tissue, mouse heart tissue, human normal colon

IF-P : mouse heart tissue,

IF/ICC : HeLa cells,

Background Information

Caldesmon (CALD1), a protein found in the cytoskeleton, plays an important role in proliferation, apoptosis, cell motility, adhesion, receptor function, and second messenger pathways. Caldesmon is a substrate of cdc2 kinase and Erk1/2 MAPK, and phosphorylation by either of these kinases reverses the inhibitory effects of caldesmon. Caldesmon(CALD1) is a prognostic biomarker and correlated with bladder cancer(PMID: 34733993) and immune infiltrates in gastric cancers(PMID: 34189308).

Notable Publications

Author	Pubmed ID	Journal	Application
Jiakang Zhang	36230524	Cancers (Basel)	WB
Dongli Liang	28252009	Sci Rep	WB
Iddrisu B Yabasin	30108509	Front Physiol	WB,IF

Storage

Storage:

Store at -20°C. Stable for one year after shipment.

Storage Buffer:

PBS with 0.02% sodium azide and 50% glycerol pH 7.3.

Aliquoting is unnecessary for -20°C storage

For technical support and original validation data for this product please contact:

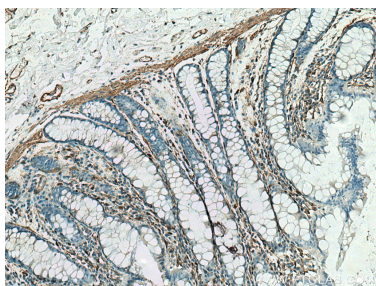
T: 4006900926

E: Proteintech-CN@ptglab.com

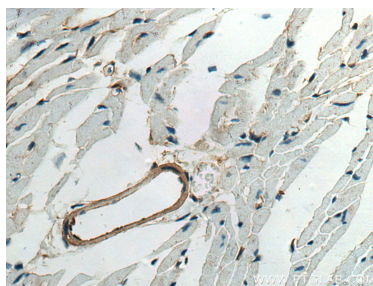
W: ptgcn.com

This product is exclusively available under Proteintech Group brand and is not available to purchase from any other manufacturer.

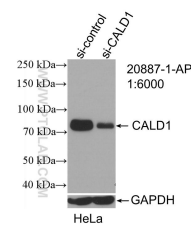
Selected Validation Data



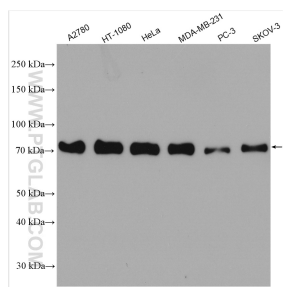
Immunohistochemical analysis of paraffin-embedded human colon tissue slide using 20887-1-AP (Caldesmon antibody) at dilution of 1:2000 (under 10x lens). Heat mediated antigen retrieval with Tris-EDTA buffer (pH 9.0).



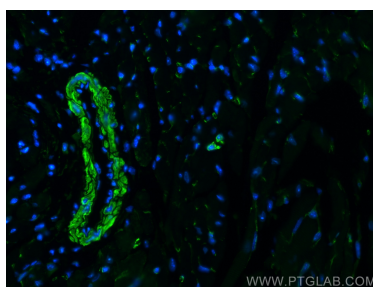
Immunohistochemical analysis of paraffin-embedded mouse heart tissue slide using 20887-1-AP (Caldesmon antibody) at dilution of 1:2000 (under 40x lens). Heat mediated antigen retrieval with Tris-EDTA buffer (pH 9.0).



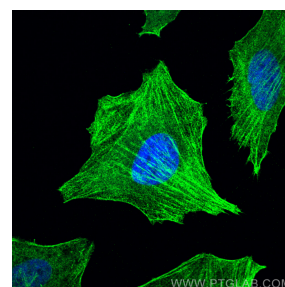
WB result of Caldesmon antibody (20887-1-AP; 1:6000; incubated at room temperature for 1.5 hours) with sh-Control and sh-Caldesmon transfected HeLa cells.



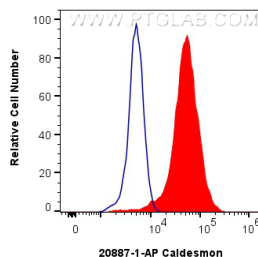
Various lysates were subjected to SDS PAGE followed by western blot with 20887-1-AP (Caldesmon antibody) at dilution of 1:10000 incubated at room temperature for 1.5 hours.



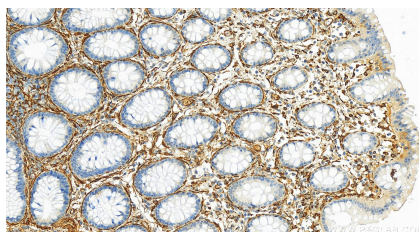
Immunofluorescent analysis of (4% PFA) fixed mouse heart tissue using Caldesmon antibody (20887-1-AP) at dilution of 1:200 and CoraLite®488-Conjugated AffiniPure Goat Anti-Rabbit IgG(H+L).



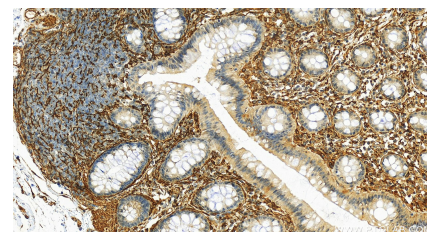
Immunofluorescent analysis of (4% PFA) fixed HeLa cells using Caldesmon antibody (20887-1-AP) at dilution of 1:400 and CoraLite®488-Conjugated AffiniPure Goat Anti-Rabbit IgG(H+L).



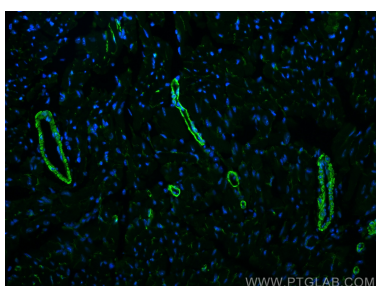
1x10⁶ HeLa cells were intracellularly stained with 0.25 ug Caldesmon Polyclonal antibody (20887-1-AP) and CoraLite®488-Conjugated Goat Anti-Rabbit IgG(H+L) (SA00013-2)(red), or 0.25 ug Rabbit IgG control Rabbit PolyAb (30000-O-AP) (blue). Cells were fixed with 4% PFA and permeabilized with Flow Cytometry Perm Buffer (PF00011-C).



Immunohistochemical analysis of paraffin-embedded human colon tissue slide using 20887-1-AP (Caldesmon antibody) at dilution of 1:2000 (under 20x lens). Heat mediated antigen retrieval with Tris-EDTA buffer (pH 9.0).



Immunohistochemical analysis of paraffin-embedded human colon tissue slide using 20887-1-AP (Caldesmon antibody) at dilution of 1:2000 (under 20x lens). Heat mediated antigen retrieval with Tris-EDTA buffer (pH 9.0).



Immunofluorescent analysis of (4% PFA) fixed mouse heart tissue using Caldesmon antibody (20887-1-AP) at dilution of 1:200 and CoraLite®488-Conjugated AffiniPure Goat Anti-Rabbit IgG(H+L).