

For Research Use Only

# MIEN1 Polyclonal antibody, PBS Only

Catalog Number:20876-1-PBS



## Basic Information

<b>Catalog Number:</b> 20876-1-PBS	<b>GenBank Accession Number:</b> BC006006	<b>Purification Method:</b> Antigen affinity purification
<b>Concentration:</b> 1 mg/ml	<b>GeneID (NCBI):</b> 84299	
<b>Source:</b> Rabbit	<b>UNIPROT ID:</b> Q9BRT3	
<b>Isotype:</b> IgG	<b>Full Name:</b> chromosome 17 open reading frame 37	
<b>Immunogen Catalog Number:</b> AG14975	<b>Calculated MW:</b> 115 aa, 12 kDa	
	<b>Observed MW:</b> 12 kDa	

## Applications

**Tested Applications:**  
WB, Indirect ELISA

**Species Specificity:**  
human

## Background Information

C17orf37 (chromosome 17 open reading frame 37), also known as C35/Rdx12/MGC14832, is located on human chromosome 17q12, 505 nucleotides from the 3' end of the ERBB2 oncogenes. C17orf37 expression positively correlates with grade and stage of breast cancer, and increased expression has been shown in prostate cancer cells and tissue specimens (PMID: 17121940, 19503095). C17orf37 gene encodes a 12-kDa protein that does not have sequence similarity with any known protein. C17orf37 is expressed as a cytosolic protein with predominant membrane localization (PMID: 21628459).

## Storage

**Storage:**  
Store at -80°C.  
**The product is shipped with ice packs. Upon receipt, store it immediately at -80°C**

**Storage Buffer:**  
PBS only, pH7.3

For technical support and original validation data for this product please contact:

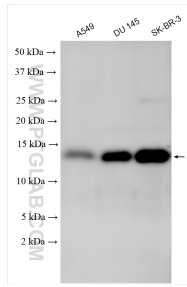
T: 4006900926

E: Proteintech-CN@ptglab.com

W: ptgcn.com

**This product is exclusively available under Proteintech Group brand and is not available to purchase from any other manufacturer.**

## Selected Validation Data



Various lysates were subjected to SDS PAGE followed by western blot with 20876-1-AP (C17orf37 antibody) at dilution of 1:500 incubated at room temperature for 1.5 hours. This data was developed using the same antibody clone with 20876-1-PBS in a different storage buffer formulation.