

For Research Use Only

C17orf37 Polyclonal antibody

Catalog Number: 20876-1-AP



Basic Information

Catalog Number:

20876-1-AP

Concentration:

400 ug/ml

Source:

Rabbit

Isotype:

IgG

Immunogen Catalog Number:

AG14975

GenBank Accession Number:

BC006006

GeneID (NCBI):

84299

UNIPROT ID:

Q9BRT3

Full Name:

chromosome 17 open reading frame

37

Calculated MW:

115 aa, 12 kDa

Observed MW:

12 kDa

Purification Method:

Antigen affinity purification

Recommended Dilutions:

WB 1:500-1:1000

Applications

Tested Applications:

WB, ELISA

Species Specificity:

human

Positive Controls:

WB : A549 cells, DU 145 cells, SK-BR-3 cells

Background Information

C17orf37 (chromosome 17 open reading frame 37), also known as C35/Rdx12/MGC14832, is located on human chromosome 17q12, 505 nucleotides from the 3' end of the ERBB2 oncogenes. C17orf37 expression positively correlates with grade and stage of breast cancer, and increased expression has been shown in prostate cancer cells and tissue specimens (PMID: 17121940, 19503095). C17orf37 gene encodes a 12-kDa protein that does not have sequence similarity with any known protein. C17orf37 is expressed as a cytosolic protein with predominant membrane localization (PMID: 21628459).

Storage

Storage:

Store at -20°C. Stable for one year after shipment.

Storage Buffer:

PBS with 0.02% sodium azide and 50% glycerol pH 7.3.

Aliquoting is unnecessary for -20°C storage

For technical support and original validation data for this product please contact:

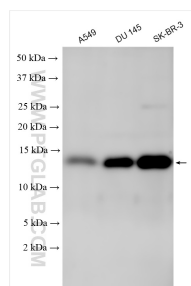
T: 4006900926

E: Proteintech-CN@ptglab.com

W: ptgcn.com

This product is exclusively available under Proteintech Group brand and is not available to purchase from any other manufacturer.

Selected Validation Data



Various lysates were subjected to SDS PAGE followed by western blot with 20876-1-AP (C17orf37 antibody) at dilution of 1:500 incubated at room temperature for 1.5 hours.