

For Research Use Only

# TFPI Polyclonal antibody

Catalog Number: 20865-1-AP **3 Publications**



## Basic Information

<b>Catalog Number:</b> 20865-1-AP	<b>GenBank Accession Number:</b> BC015514	<b>Purification Method:</b> Antigen affinity purification
<b>Size:</b> 170 µg/ml	<b>GeneID (NCBI):</b> 7035	<b>Recommended Dilutions:</b> WB 1:500-1:1000 IF 1:50-1:500
<b>Source:</b> Rabbit	<b>UNIPROT ID:</b> P10646	
<b>Isotype:</b> IgG	<b>Full Name:</b> tissue factor pathway inhibitor (lipoprotein-associated coagulation inhibitor)	
<b>Immunogen Catalog Number:</b> AG14913	<b>Calculated MW:</b> 251aa, 29 kDa; 304aa, 35 kDa	
	<b>Observed MW:</b> 40-45 kDa	

## Applications

<b>Tested Applications:</b> IF/ICC, WB, ELISA	<b>Positive Controls:</b> WB : HeLa cells, HepG2 cells
<b>Cited Applications:</b> WB, IHC	<b>IF :</b> HepG2 cells,
<b>Species Specificity:</b> human	
<b>Cited Species:</b> human	

## Background Information

Tissue factor pathway inhibitor (TFPI) is a critical anticoagulant protein present in endothelium and platelets. TFPI is produced as two major isoforms in humans, TFPIa and TFPIb that result from alternative splicing. The TFPIb isoform localizes to the endothelium surface where it is a potent inhibitor of tissue factor-factor VIIa complexes that initiate blood coagulation. The TFPIa isoform is present in platelets. TFPI is a Kunitz-type serine protease inhibitor that exerts anticoagulant activity by blocking early procoagulant stimuli. TFPI can enhance anti-thrombotic treatment in sepsis, inflammatory diseases, and cardiovascular diseases.

## Notable Publications

Author	Pubmed ID	Journal	Application
Chunyan Luo	32445923	Gene	WB
Kang An	29364003	Clin Appl Thromb Hemost	IHC
Xian Li	37660436	Thromb Res	WB

## Storage

**Storage:**  
Store at -20°C. Stable for one year after shipment.  
**Storage Buffer:**  
PBS with 0.02% sodium azide and 50% glycerol pH 7.3.  
Aliquoting is unnecessary for -20°C storage

For technical support and original validation data for this product please contact:

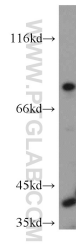
T: 4006900926

E: [Proteintech-CN@ptglab.com](mailto:Proteintech-CN@ptglab.com)

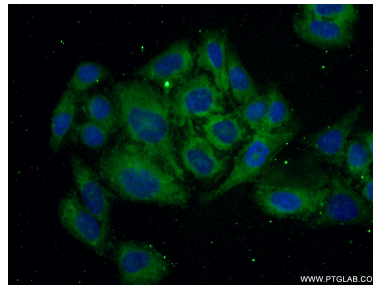
W: [ptgcn.com](http://ptgcn.com)

**This product is exclusively available under Proteintech Group brand and is not available to purchase from any other manufacturer.**

## Selected Validation Data



HeLa cells were subjected to SDS PAGE followed by western blot with 20865-1-AP (TFPI antibody) at dilution of 1:500 incubated at room temperature for 1.5 hours.



Immunofluorescent analysis of (-20°C Ethanol) fixed HepG2 cells using 20865-1-AP (TFPI antibody) at dilution of 1:50 and Alexa Fluor 488-conjugated AffiniPure Goat Anti-Rabbit IgG(H+L).