

For Research Use Only

HTATSF1 Polyclonal antibody

Catalog Number: 20805-1-AP

Featured Product

4 Publications



Basic Information

Catalog Number:

20805-1-AP

Size:

400 ug/ml

Source:

Rabbit

Isotype:

IgG

Immunogen Catalog Number:

AG14744

GenBank Accession Number:

BC009896

GeneID (NCBI):

27336

UNIPROT ID:

O43719

Full Name:

HIV-1 Tat specific factor 1

Calculated MW:

755 aa, 86 kDa

Observed MW:

130-140 kDa

Purification Method:

Antigen affinity purification

Recommended Dilutions:

WB 1:1000-1:4000

IP 0.5-4.0 ug for 1.0-3.0 mg of total protein lysate

IHC 1:20-1:200

IF/ICC 1:10-1:100

Applications

Tested Applications:

WB, IHC, IF/ICC, IP, ELISA

Cited Applications:

WB, IHC, IP

Species Specificity:

human, mouse, rat

Cited Species:

human

Note-IHC: suggested antigen retrieval with TE buffer pH 9.0; (*) Alternatively, antigen retrieval may be performed with citrate buffer pH 6.0

Positive Controls:

WB : HeLa cells, mouse brain tissue, HepG2 cells, rat brain tissue, Jurkat cells

IP : HepG2 cells,

IHC : human breast cancer tissue, human brain tissue

IF/ICC : HeLa cells,

Background Information

Notable Publications

Author	Pubmed ID	Journal	Application
Jiao Zhao	35597237	Mol Cell	WB
Yu-Chan Chang	34091600	Cell Death Discov	WB,IHC,IP
Xiaodong Lu	27353326	Nucleic Acids Res	

Storage

Storage:

Store at -20°C. Stable for one year after shipment.

Storage Buffer:

PBS with 0.02% sodium azide and 50% glycerol pH 7.3.

Aliquoting is unnecessary for -20°C storage

For technical support and original validation data for this product please contact:

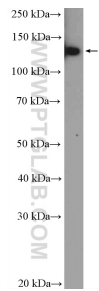
T: 4006900926

E: Proteintech-CN@ptglab.com

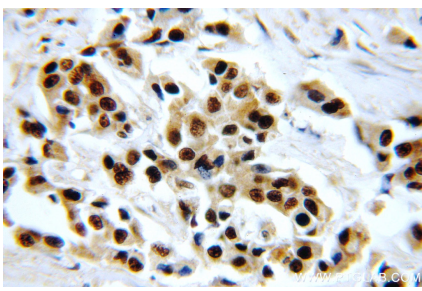
W: ptgcn.com

This product is exclusively available under Proteintech Group brand and is not available to purchase from any other manufacturer.

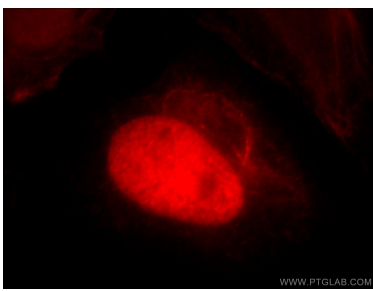
Selected Validation Data



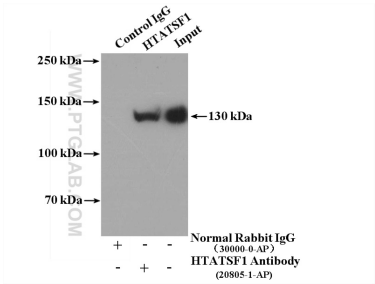
HeLa cells were subjected to SDS PAGE followed by western blot with 20805-1-AP (HTATSF1 Antibody) at dilution of 1:2000 incubated at room temperature for 1.5 hours.



Immunohistochemical analysis of paraffin-embedded human breast cancer using 20805-1-AP (HTATSF1 antibody) at dilution of 1:100 (under 40x lens).



Immunofluorescent analysis of HeLa cells, using HTATSF1 antibody 20805-1-AP at 1:25 dilution and Rhodamine-labeled goat anti-rabbit IgG (red).



IP result of anti-HTATSF1 (IP:20805-1-AP, 4ug; Detection:20805-1-AP 1:2000) with HepG2 cells lysate 2400ug.