

For Research Use Only

# C16orf13 Polyclonal antibody

Catalog Number: 20801-1-AP



## Basic Information

Catalog Number:

20801-1-AP

Size:

350 µg/ml

Source:

Rabbit

Isotype:

IgG

Immunogen Catalog Number:

AG14718

GenBank Accession Number:

BC007207

GeneID (NCBI):

84326

UNIPROT ID:

Q96S19

Full Name:

chromosome 16 open reading frame

13

Calculated MW:

204 aa, 23 kDa

Observed MW:

23 kDa

Purification Method:

Antigen affinity purification

Recommended Dilutions:

WB 1:500-1:2000

IF/ICC 1:20-1:200

## Applications

Tested Applications:

WB, IF/ICC, ELISA

Species Specificity:

human, mouse, rat

Positive Controls:

WB : mouse liver tissue, HeLa cells, rat liver tissue

IF/ICC : HeLa cells,

## Background Information

### Storage

Storage:

Store at -20°C. Stable for one year after shipment.

Storage Buffer:

PBS with 0.02% sodium azide and 50% glycerol pH 7.3.

Aliquoting is unnecessary for -20°C storage

For technical support and original validation data for this product please contact:

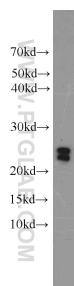
T: 4006900926

E: [Proteintech-CN@ptglab.com](mailto:Proteintech-CN@ptglab.com)

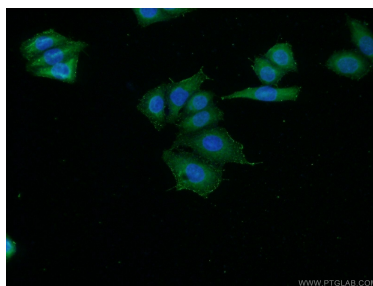
W: [ptgcn.com](http://ptgcn.com)

This product is exclusively available under Proteintech Group brand and is not available to purchase from any other manufacturer.

## Selected Validation Data



mouse liver tissue were subjected to SDS PAGE followed by western blot with 20801-1-AP (C16orf13 antibody) at dilution of 1:1000 incubated at room temperature for 1.5 hours.



Immunofluorescent analysis of HeLa cells using 20801-1-AP (C16orf13 antibody) at dilution of 1:50 and Alexa Fluor 488-conjugated AffiniPure Goat Anti-Rabbit IgG(H+L).