

For Research Use Only

KIFC1 Polyclonal antibody

Catalog Number: 20790-1-AP

Featured Product

11 Publications



Basic Information

Catalog Number:

20790-1-AP

Size:

850 ug/ml

Source:

Rabbit

Isotype:

IgG

Immunogen Catalog Number:

AG14492

GenBank Accession Number:

BC000712

GeneID (NCBI):

3833

UNIPROT ID:

Q9BW19

Full Name:

kinesin family member C1

Calculated MW:

673 aa, 74 kDa

Observed MW:

55-70 kDa

Purification Method:

Antigen affinity purification

Recommended Dilutions:

WB 1:500-1:1000

IHC 1:50-1:500

IF/ICC 1:10-1:100

Applications

Tested Applications:

WB, IHC, IF/ICC, ELISA

Cited Applications:

WB, IHC, IF, Peptide array

Species Specificity:

human, mouse, rat

Cited Species:

human, mouse, rat

Note-IHC: suggested antigen retrieval with TE buffer pH 9.0; (*) Alternatively, antigen retrieval may be performed with citrate buffer pH 6.0

Positive Controls:

WB : rat testis tissue, HeLa cells, mouse testis tissue, NIH/3T3 cells

IHC : human bowen disease, human placenta tissue, human testis tissue

IF/ICC : Hela cells, HepG2 cells

Background Information

KIFC1 is a molecular motor protein belonging to the kinesin-14 family that has motor domains at the C-terminus. KIFC1 is widely distributed, with highest expression in testis and participating in acrosome biogenesis and vesicle transport. It is also abundant in ovary, spleen, and liver. KIFC1 proteins are generally localized in the perinuclear region, and have been found to be involved chromosome alignment, congression and intracellular DNA transport. This antibody was raised against the C-terminal region of human KIFC1 protein, and recognizes 55-70 kDa of endogenous KIFC1 protein in multiple tissue lysates. (12826589, 15236353, 23543461)

Notable Publications

Author	Pubmed ID	Journal	Application
Anusruti Sabui	36245925	Front Mol Neurosci	
Erlei Zhi	27690105	Genes (Basel)	WB,IF
Si-Hyung Lee	29042452	FASEB J	IF

Storage

Storage:

Store at -20°C. Stable for one year after shipment.

Storage Buffer:

PBS with 0.02% sodium azide and 50% glycerol pH 7.3.

Aliquoting is unnecessary for -20°C storage

For technical support and original validation data for this product please contact:

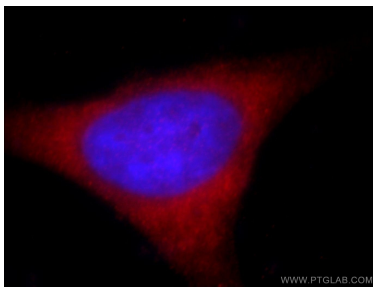
T: 4006900926

E: Proteintech-CN@ptglab.com

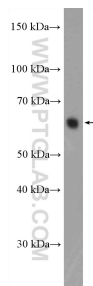
W: ptgcn.com

This product is exclusively available under Proteintech Group brand and is not available to purchase from any other manufacturer.

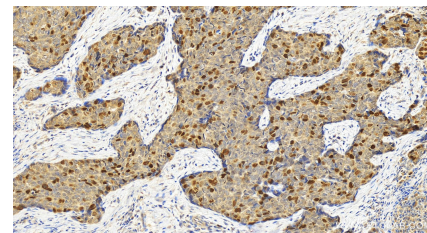
Selected Validation Data



Immunofluorescent analysis of HeLa cells, using KIFC1 antibody 20790-1-AP at 1:25 dilution and Rhodamine-labeled goat anti-rabbit IgG (red). Blue pseudocolor = DAPI (fluorescent DNA dye).



rat testis tissue were subjected to SDS PAGE followed by western blot with 20790-1-AP (KIFC1 Antibody) at dilution of 1:600 incubated at room temperature for 1.5 hours.



Immunohistochemical analysis of paraffin-embedded human Bowen disease slide using 20790-1-AP (KIFC1 antibody) at dilution of 1:200 (under 20x lens). Heat mediated antigen retrieval with Tris-EDTA buffer (pH 9.0).