

For Research Use Only

SMO Polyclonal antibody

Catalog Number: 20787-1-AP

39 Publications



Basic Information

Catalog Number:

20787-1-AP

Concentration:

800 ug/ml

Source:

Rabbit

Isotype:

IgG

Immunogen Catalog Number:

AG14322

GenBank Accession Number:

BC009989

GeneID (NCBI):

6608

UNIPROT ID:

Q99835

Full Name:

smoothened homolog (Drosophila)

Calculated MW:

787 aa, 86 kDa

Purification Method:

Antigen affinity purification

Recommended Dilutions:

IHC 1:500-1:2000

Applications

Tested Applications:

IHC, ELISA

Cited Applications:

IHC, IF

Species Specificity:

human, mouse, rat

Cited Species:

human, mouse, chicken

Note-IHC: suggested antigen retrieval with TE buffer pH 9.0; (*) Alternatively, antigen retrieval may be performed with citrate buffer pH 6.0

Positive Controls:

IHC : human prostate cancer tissue, human testis tissue, human colon cancer tissue, mouse testis tissue, rat testis tissue

Background Information

Smoothened (SMO) is a G protein-coupled receptor that is a component of the hedgehog (Hh) signaling pathway and is conserved from flies to humans. The Hh pathway plays a central role in animal development and stem-cell function. Defects in Hh signaling lead to birth defects and cancer in humans. Expressed on the primary cilium, SMO interacts with the patched protein, a receptor for Hh proteins.

Notable Publications

Author	Pubmed ID	Journal	Application
Yu Xu	36247302	Am J Transl Res	
Lei Liu	30273566	Chem Biol Interact	
Jingkai Sun	34659903	Am J Cancer Res	IHC

Storage

Storage:

Store at -20°C. Stable for one year after shipment.

Storage Buffer:

PBS with 0.02% sodium azide and 50% glycerol pH 7.3.

Aliquoting is unnecessary for -20°C storage

For technical support and original validation data for this product please contact:

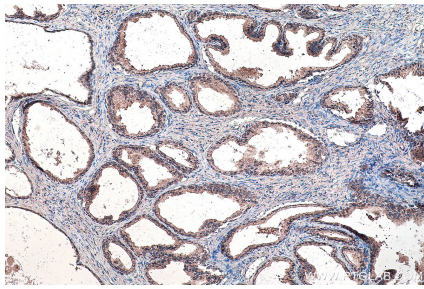
T: 4006900926

E: Proteintech-CN@ptglab.com

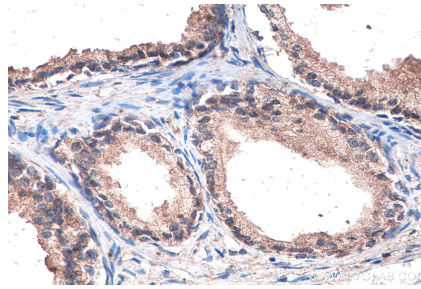
W: ptgcn.com

This product is exclusively available under Proteintech Group brand and is not available to purchase from any other manufacturer.

Selected Validation Data



Immunohistochemical analysis of paraffin-embedded human prostate cancer tissue slide using 20787-1-AP (SMO antibody) at dilution of 1:1000 (under 10x lens). Heat mediated antigen retrieval with Tris-EDTA buffer (pH 9.0).



Immunohistochemical analysis of paraffin-embedded human prostate cancer tissue slide using 20787-1-AP (SMO antibody) at dilution of 1:1000 (under 40x lens). Heat mediated antigen retrieval with Tris-EDTA buffer (pH 9.0).