

WDR55 Polyclonal antibody

Catalog Number: 20786-1-AP

Basic Information

Catalog Number:

20786-1-AP

Size:

1000 µg/ml

Source:

Rabbit

Isotype:

IgG

Immunogen Catalog Number:

AG14241

GenBank Accession Number:

BC002482

GeneID (NCBI):

54853

UNIPROT ID:

Q9H6Y2

Full Name:

WD repeat domain 55

Calculated MW:

383 aa, 42 kDa

Observed MW:

42-50 kDa

Purification Method:

Antigen affinity purification

Recommended Dilutions:

WB 1:2000-1:10000

IP 0.5-4.0 µg for 1.0-3.0 mg of total protein lysate

IHC 1:50-1:500

IF/ICC 1:50-1:500

Applications

Tested Applications:

WB, IP, IHC, IF/ICC, ELISA

Species Specificity:

human

Note-IHC: suggested antigen retrieval with TE buffer pH 9.0; (*) Alternatively, antigen retrieval may be performed with citrate buffer pH 6.0

Positive Controls:

WB : HeLa cells, Jurkat cells

IP : HeLa cells,

IHC : human liver cancer tissue,

IF/ICC : HepG2 cells,

Background Information

WD repeat domain 55 (WDR55) also named as, FLJ20195, is a 383 amino acid protein, which contains seven WD repeats and belongs to the WD repeat WDR55 family. WDR55 localizes in the nucleus and cytoplasm. WDR55 acts as a modulator of rRNA synthesis and play a central role in organogenesis.

Storage

Storage:

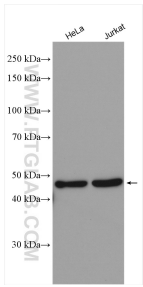
Store at -20°C. Stable for one year after shipment.

Storage Buffer:

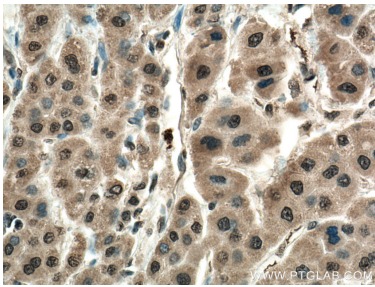
PBS with 0.02% sodium azide and 50% glycerol pH 7.3.

Aliquoting is unnecessary for -20°C storage

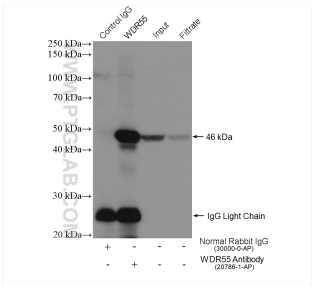
Selected Validation Data



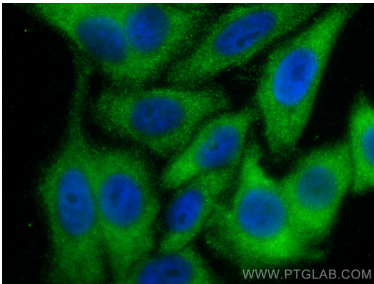
Various lysates were subjected to SDS PAGE followed by western blot with 20786-1-AP (WDR55 antibody) at dilution of 1:5000 incubated at room temperature for 1.5 hours.



Immunohistochemical analysis of paraffin-embedded human liver cancer tissue slide using 20786-1-AP (WDR55 antibody) at dilution of 1:200 (under 40x lens. Heat mediated antigen retrieval with Tris-EDTA buffer (pH 9.0).



IP result of anti-WDR55 (IP:20786-1-AP, 4ug; Detection:20786-1-AP 1:1000) with HeLa cells lysate 680 ug.



Immunofluorescent analysis of (-20°C Ethanol) fixed HepG2 cells using WDR55 antibody (20786-1-AP) at dilution of 1:200 and CoraLite®488-Conjugated AffiniPure Goat Anti-Rabbit IgG(H+L) (SA00013-2).