

For Research Use Only

C11orf70 Polyclonal antibody, PBS Only

Catalog Number: 20780-1-PBS



Basic Information

Catalog Number: 20780-1-PBS	GenBank Accession Number: BC006128	Purification Method: Antigen affinity purification
Source: Rabbit	GeneID (NCBI): 85016	
Isotype: IgG	UNIPROT ID: Q9BRQ4	
Immunogen Catalog Number: AG14793	Full Name: chromosome 11 open reading frame 70	
	Calculated MW: 267 aa, 31 kDa	
	Observed MW: 31 kDa	

Applications

Tested Applications:
WB, IHC, IF/ICC, Indirect ELISA

Species Specificity:
human, mouse

Background Information

The CFAP300 protein is an important member of the cilia- and flagella-associated protein family, localized in the basal body and axoneme structures of cellular cilia. It plays a central role in ciliary assembly and stability, primarily by participating in the transport and anchoring of pre-assembled complexes within the cytoplasm. Research indicates that mutations in the CFAP300 gene lead to structural and functional defects in cilia, which are closely associated with various human ciliopathies, such as primary ciliary dyskinesia, heterotaxy, and male infertility. Loss of its function disrupts intraflagellar transport, affecting key physiological processes including left-right axis determination during embryonic development and mucociliary clearance in the respiratory tract. Therefore, CFAP300 is a crucial protein molecule for understanding ciliary biology and the mechanisms of related diseases.

Storage

Storage:
Store at -80°C.
The product is shipped with ice packs. Upon receipt, store it immediately at -80°C

Storage Buffer:
PBS only, pH7.3

For technical support and original validation data for this product please contact:

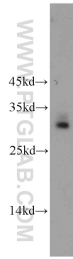
T: 4006900926

E: Proteintech-CN@ptglab.com

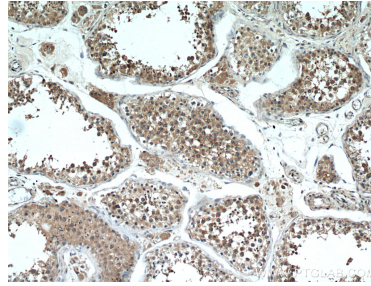
W: ptgcn.com

This product is exclusively available under Proteintech Group brand and is not available to purchase from any other manufacturer.

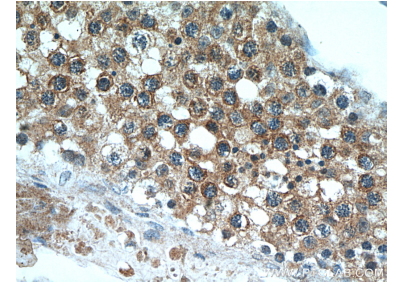
Selected Validation Data



mouse testis tissue were subjected to SDS PAGE followed by western blot with 20780-1-AP (C11orf70 antibody) at dilution of 1:400 incubated at room temperature for 1.5 hours. This data was developed using the same antibody clone with 20780-1-PBS in a different storage buffer formulation.



Immunohistochemical analysis of paraffin-embedded human testis using 20780-1-AP (C11orf70 antibody) at dilution of 1:50 (under 10x lens). This data was developed using the same antibody clone with 20780-1-PBS in a different storage buffer formulation.



Immunohistochemical analysis of paraffin-embedded human testis using 20780-1-AP (C11orf70 antibody) at dilution of 1:50 (under 40x lens). This data was developed using the same antibody clone with 20780-1-PBS in a different storage buffer formulation.



Immunofluorescent analysis of (-20°C Ethanol) fixed HeLa cells using C11orf70 antibody (20780-1-AP) at dilution of 1:200 and CoraLite®488-Conjugated Goat Anti-Rabbit IgG(H+L) (SA00013-2). This data was developed using the same antibody clone with 20780-1-PBS in a different storage buffer formulation.