

For Research Use Only

Human IgG Lambda Light Chain Polyclonal antibody

Catalog Number: 20758-1-AP

1 Publications



Basic Information

Catalog Number:

20758-1-AP

Size:

400 µg/ml

Source:

Rabbit

Isotype:

IgG

Immunogen Catalog Number:

AG14693

GenBank Accession Number:

BC007782

GeneID (NCBI):

3537

Full Name:

immunoglobulin lambda constant 1 (Mcg marker)

Calculated MW:

233 aa, 25 kDa

Observed MW:

25 kDa

Purification Method:

Antigen affinity purification

Recommended Dilutions:

WB 1:500-1:2000

IHC 1:50-1:500

IF-P 1:200-1:800

Applications

Tested Applications:

WB, IHC, IF-P, ELISA

Cited Applications:

IHC, IF

Species Specificity:

human

Note-IHC: suggested antigen retrieval with TE buffer pH 9.0; (*) Alternatively, antigen retrieval may be performed with citrate buffer pH 6.0

Positive Controls:

WB : human plasma tissue,

IHC : human tonsillitis tissue,

IF-P : human tonsillitis tissue,

Background Information

This antibody detects the lambda light chain of human IgG.

Notable Publications

Author	Pubmed ID	Journal	Application
Chuansong Quan	37250798	iScience	IHC,IF

Storage

Storage:

Store at -20°C. Stable for one year after shipment.

Storage Buffer:

PBS with 0.02% sodium azide and 50% glycerol pH 7.3.

Aliquoting is unnecessary for -20°C storage

For technical support and original validation data for this product please contact:

T: 4006900926

E: Proteintech-CN@ptglab.com

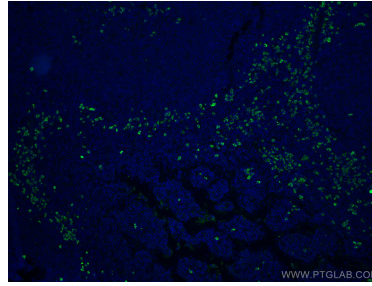
W: ptgcn.com

This product is exclusively available under Proteintech Group brand and is not available to purchase from any other manufacturer.

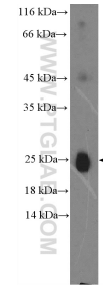
Selected Validation Data



Immunohistochemical analysis of paraffin-embedded human tonsillitis tissue slide using 20758-1-AP (Human IgG Lambda Light Chain antibody) at dilution of 1:200 (under 4x lens). Heat mediated antigen retrieval with Tris-EDTA buffer (pH 9.0).



Immunofluorescent analysis of (4% PFA) fixed human tonsillitis tissue using Human IgG Lambda Light Chain antibody (20758-1-AP) at dilution of 1:400 and CoraLite®488-Conjugated Goat Anti-Rabbit IgG(H+L).



human plasma were subjected to SDS PAGE followed by western blot with 20758-1-AP (Human IgG Lambda Light Chain antibody) at dilution of 1:1000 incubated at room temperature for 1.5 hours.