

# ARX Polyclonal antibody

Catalog Number: 20739-1-AP

## Basic Information

**Catalog Number:**

20739-1-AP

**Size:**

400 µg/ml

**Source:**

Rabbit

**Isotype:**

IgG

**GenBank Accession Number:**

NM\_139058

**GeneID (NCBI):**

170302

**UNIPROT ID:**

Q96QS3

**Full Name:**

aristaless related homeobox

**Calculated MW:**

58 kDa

**Observed MW:**

58 kDa

**Purification Method:**

Antigen affinity purification

**Recommended Dilutions:**

WB 1:200-1:1000

## Applications

**Tested Applications:**

WB, ELISA

**Species Specificity:**

human, mouse

**Positive Controls:**

WB : NIH/3T3 cells, SH-SY5Y cells

## Background Information

ARX belongs to the paired homeobox family and Bicoid subfamily. It is a transcription factor which required for normal brain development. ARX may be important for maintenance of specific neuronal subtypes in the cerebral cortex and axonal guidance in the floor plate. Defects in ARX are the cause of lissencephaly X-linked type 2 (LISX2), epileptic encephalopathy early infantile type 1 (EIEE1), Partington syndrome (PRTS), mental retardation X-linked ARX-related (MRXARX), and agenesis of the corpus callosum with abnormal genitalia (ACCAG). The antibody is specific to ARX. This is a rabbit polyclonal antibody raised against a peptide mapping within human ARX.

## Storage

**Storage:**

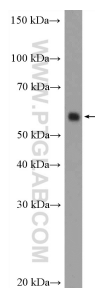
Store at -20°C. Stable for one year after shipment.

**Storage Buffer:**

PBS with 0.02% sodium azide and 50% glycerol pH 7.3.

Aliquoting is unnecessary for -20°C storage

## Selected Validation Data



NIH/3T3 cells were subjected to SDS PAGE followed by western blot with 20739-1-AP (ARX Antibody) at dilution of 1:300 incubated at room temperature for 1.5 hours.