

For Research Use Only

CFTR Polyclonal antibody, PBS Only

Catalog Number:20738-1-PBS



Basic Information

Catalog Number:

20738-1-PBS

Concentration:

1 mg/ml

Source:

Rabbit

Isotype:

IgG

GenBank Accession Number:

NM_000492

GeneID (NCBI):

1080

UNIPROT ID:

P13569

Full Name:

cystic fibrosis transmembrane
conductance regulator (ATP-binding
cassette sub-family C, member 7)

Calculated MW:

168 kDa

Purification Method:

Antigen affinity purification

Applications

Tested Applications:

IHC, FC (Intra), Indirect ELISA

Species Specificity:

human

Background Information

CFTR is a member of the ATP-binding cassette (ABC) family of membrane transport proteins, most members of which function as ATP-dependent pumps. CFTR is unique among human ABC proteins in functioning not as a pump, but as an ion channel.

Storage

Storage:

Store at -80°C.

The product is shipped with ice packs. Upon receipt, store it immediately at -80°C

Storage Buffer:

PBS only, pH7.3

For technical support and original validation data for this product please contact:

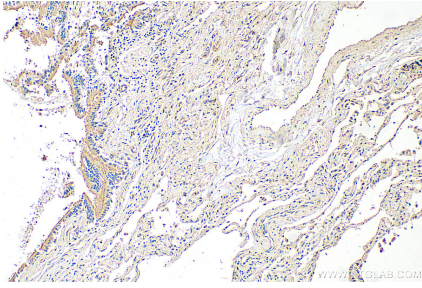
T: 4006900926

E: Proteintech-CN@ptglab.com

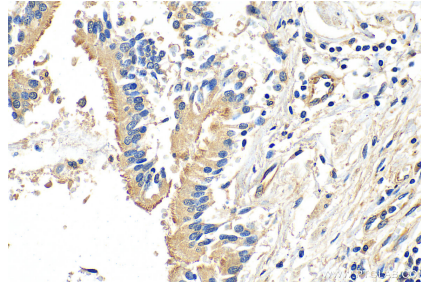
W: ptgcn.com

This product is exclusively available under Proteintech Group brand and is not available to purchase from any other manufacturer.

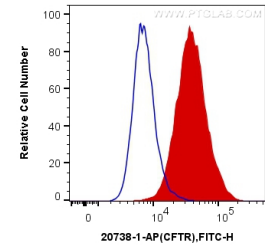
Selected Validation Data



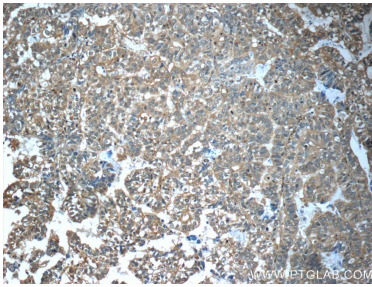
Immunohistochemical analysis of paraffin-embedded human lung tissue slide using 20738-1-AP (CFTR antibody) at dilution of 1:1000 (under 10x lens). Heat mediated antigen retrieval with Tris-EDTA buffer (pH 9.0). This data was developed using the same antibody clone with 20738-1-PBS in a different storage buffer formulation.



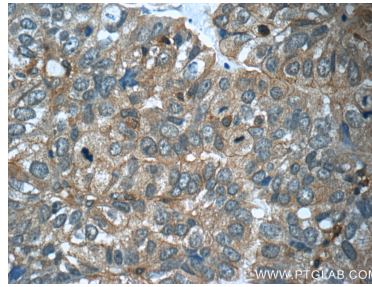
Immunohistochemical analysis of paraffin-embedded human lung tissue slide using 20738-1-AP (CFTR antibody) at dilution of 1:1000 (under 40x lens). Heat mediated antigen retrieval with Tris-EDTA buffer (pH 9.0). This data was developed using the same antibody clone with 20738-1-PBS in a different storage buffer formulation.



1X10⁶ HUVEC cells were intracellularly stained with 0.2 ug Anti-Human CFTR (20738-1-AP) (red), or 0.2 ug Control Antibody. Cells were fixed with 4% PFA and permeabilized with Flow Cytometry Perm Buffer (PF00011-C). This data was developed using the same antibody clone with 20738-1-PBS in a different storage buffer formulation.



Immunohistochemical analysis of paraffin-embedded human breast cancer tissue slide using 20738-1-AP (CFTR Antibody) at dilution of 1:50 (under 10x lens). This data was developed using the same antibody clone with 20738-1-PBS in a different storage buffer formulation.



Immunohistochemical analysis of paraffin-embedded human breast cancer tissue slide using 20738-1-AP (CFTR Antibody) at dilution of 1:50 (under 40x lens). This data was developed using the same antibody clone with 20738-1-PBS in a different storage buffer formulation.