

For Research Use Only

# GHR Polyclonal antibody

Catalog Number: 20713-1-AP

Featured Product

7 Publications



## Basic Information

### Catalog Number:

20713-1-AP

### Size:

400 µg/ml

### Source:

Rabbit

### Isotype:

IgG

### GenBank Accession Number:

NM\_000163

### GeneID (NCBI):

2690

### UNIPROT ID:

P10912

### Full Name:

GH binding protein

### Calculated MW:

72 kDa

### Observed MW:

120 kDa

### Purification Method:

Antigen affinity purification

### Recommended Dilutions:

WB 1:500-1:1000

IHC 1:50-1:500

IF/ICC 1:50-1:500

## Applications

### Tested Applications:

WB, IHC, IF/ICC, ELISA

### Cited Applications:

WB, IHC

### Species Specificity:

human, pig

### Cited Species:

human, pig, rabbit

### Positive Controls:

WB : pig liver tissue, pig lung tissue

IHC : human liver tissue,

IF/ICC : HepG2 cells,

**Note-IHC: suggested antigen retrieval with *TE buffer pH 9.0*; (\*) Alternatively, antigen retrieval may be performed with *citrate buffer pH 6.0***

## Background Information

GH is a peptide hormone with many pleiotropic actions, including the regulation of metabolism, postnatal growth, cognition, immune, cardiac and renal systems and gut function (PMID: 26059750). GH exerts these actions primarily through alterations in gene expression, initiated by activation of its membrane receptor GHR and the resultant activation of the associated JAK2 and Src family kinases. GH receptor (GHR) is a member of the cytokine receptor family. Mutations in GHR gene have been associated with Laron syndrome, also known as the GH insensitivity syndrome (GHIS), a disorder characterized by short stature.

## Notable Publications

Author	Pubmed ID	Journal	Application
Mo Cheng	31725956	FEBS Open Bio	WB
Hongmei Zhang	34252534	Cell Signal	WB
Hong-Zhu Yan	33492754	J Cell Mol Med	WB

## Storage

### Storage:

Store at -20°C. Stable for one year after shipment.

### Storage Buffer:

PBS with 0.02% sodium azide and 50% glycerol pH 7.3.

Aliquoting is unnecessary for -20°C storage

For technical support and original validation data for this product please contact:

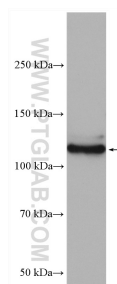
T: 4006900926

E: [Proteintech-CN@ptglab.com](mailto:Proteintech-CN@ptglab.com)

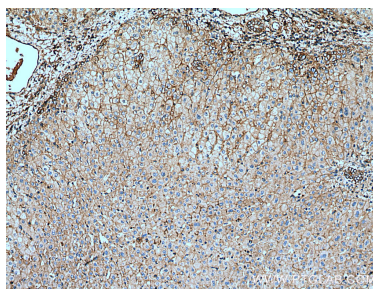
W: [ptgcn.com](http://ptgcn.com)

**This product is exclusively available under Proteintech Group brand and is not available to purchase from any other manufacturer.**

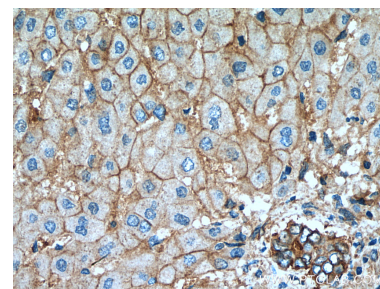
## Selected Validation Data



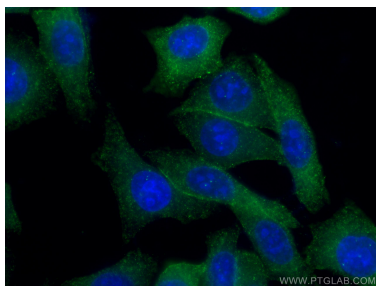
pig liver tissue were subjected to SDS PAGE followed by western blot with 20713-1-AP (GHR antibody) at dilution of 1:600 incubated at room temperature for 1.5 hours.



Immunohistochemical analysis of paraffin-embedded human liver tissue slide using 20713-1-AP (GHR antibody) at dilution of 1:200 (under 10x lens). Heat mediated antigen retrieval with Tris-EDTA buffer (pH 9.0).



Immunohistochemical analysis of paraffin-embedded human liver tissue slide using 20713-1-AP (GHR antibody) at dilution of 1:200 (under 40x lens). Heat mediated antigen retrieval with Tris-EDTA buffer (pH 9.0).



Immunofluorescent analysis of (-20°C Ethanol) fixed HepG2 cells using 20713-1-AP (GHR antibody), at dilution of 1:200 and CoraLite®488-Conjugated Goat Anti-Rabbit IgG(H+L).