

For Research Use Only

Filamin B Polyclonal antibody

Catalog Number: 20685-1-AP

4 Publications



Basic Information

Catalog Number:

20685-1-AP

Concentration:

213 ug/ml

Source:

Rabbit

Isotype:

IgG

GenBank Accession Number:

NM_001457

GeneID (NCBI):

2317

UNIPROT ID:

O75369

Full Name:

filamin B, beta (actin binding protein 278)

Calculated MW:

278 kDa

Observed MW:

250-278 kDa

Purification Method:

Antigen affinity purification

Recommended Dilutions:

WB 1:500-1:2000

IHC 1:50-1:500

IF/ICC 1:50-1:500

Applications

Tested Applications:

WB, IHC, IF/ICC, ELISA

Cited Applications:

WB, IHC, IF

Species Specificity:

human, mouse, rat

Cited Species:

human, mouse

Note-IHC: suggested antigen retrieval with TE buffer pH 9.0; (*) Alternatively, antigen retrieval may be performed with citrate buffer pH 6.0

Positive Controls:

WB : HeLa cells, NIH/3T3 cells, U2OS cells, C2C12 cells

IHC : human liver cancer tissue, human normal colon, human colon tissue

IF/ICC : HepG2 cells,

Background Information

FLNB, also named as FLN1L, FLN3, TABP, TAP and Fh1, belongs to the filamin family. FLNB connects cell membrane constituents to the actin cytoskeleton. It may promote orthogonal branching of actin filaments and links actin filaments to membrane glycoproteins. It is an anchors various transmembrane proteins to the actin cytoskeleton. Interaction with FLNA, FLNB may allow neuroblast migration from the ventricular zone into the cortical plate. Various interactions and localizations of isoforms affect myotube morphology and myogenesis. The antibody is specific to FLNB. It can recognize isoform 1,2,3,6,7 of FLNB. It has no cross reaction to FLNA and FLNC.

Notable Publications

Author	Pubmed ID	Journal	Application
Wenwen Chen	32665550	Cell Death Dis	WB
Xi Wang	39498024	Heliyon	WB
Guoyong Fan	38455418	Am J Cancer Res	IHC,IF

Storage

Storage:

Store at -20°C. Stable for one year after shipment.

Storage Buffer:

PBS with 0.02% sodium azide and 50% glycerol pH 7.3.

Aliquoting is unnecessary for -20°C storage

For technical support and original validation data for this product please contact:

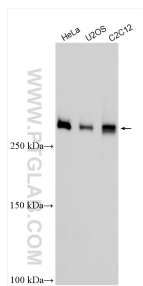
T: 4006900926

E: Proteintech-CN@ptglab.com

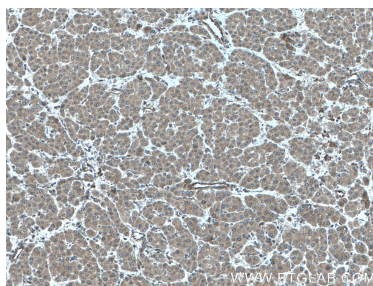
W: ptgcn.com

This product is exclusively available under Proteintech Group brand and is not available to purchase from any other manufacturer.

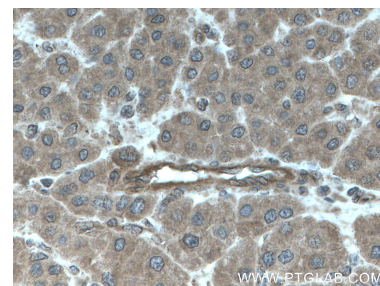
Selected Validation Data



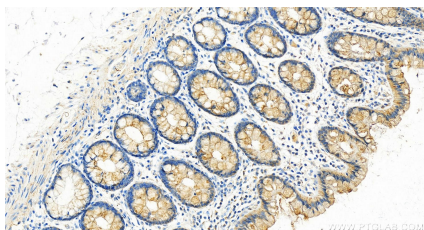
Various lysates were subjected to SDS PAGE followed by western blot with 20685-1-AP (Filamin B antibody) at dilution of 1:1000 incubated at room temperature for 1.5 hours.



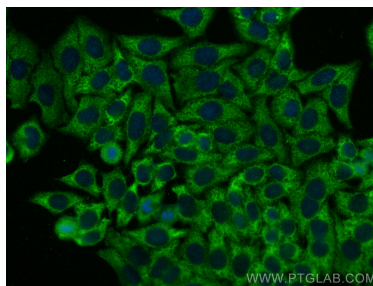
Immunohistochemical analysis of paraffin-embedded human liver cancer tissue slide using 20685-1-AP (FLNB antibody) at dilution of 1:200 (under 10x lens. Heat mediated antigen retrieval with Tris-EDTA buffer (pH 9.0).



Immunohistochemical analysis of paraffin-embedded human liver cancer tissue slide using 20685-1-AP (FLNB antibody) at dilution of 1:200 (under 40x lens. Heat mediated antigen retrieval with Tris-EDTA buffer (pH 9.0).



Immunohistochemical analysis of paraffin-embedded human normal colon slide using 20685-1-AP (FLNB antibody) at dilution of 1:200 (under 20x lens). Heat mediated antigen retrieval with Tris-EDTA buffer (pH 9.0).



Immunofluorescent analysis of (-20°C Ethanol) fixed HepG2 cells using FLNB antibody (20685-1-AP) at dilution of 1:200 and Multi-rAb CoraLite® Plus 488-Goat Anti-Rabbit Recombinant Secondary Antibody (H+L) (RGAR002).