

For Research Use Only

# CaMKII delta-Specific Polyclonal antibody

Catalog Number: 20667-1-AP

Featured Product

12 Publications



## Basic Information

Catalog Number:

20667-1-AP

Size:

400 ug/ml

Source:

Rabbit

Isotype:

IgG

GenBank Accession Number:

NM\_001221

GeneID (NCBI):

817

UNIPROT ID:

Q13557

Full Name:

calcium/calmodulin-dependent protein kinase II delta

Calculated MW:

59 kDa

Observed MW:

55 kDa

Purification Method:

Antigen affinity purification

Recommended Dilutions:

WB 1:500-1:2000

IP 0.5-4.0 ug for 1.0-3.0 mg of total protein lysate

IHC 1:50-1:500

## Applications

Tested Applications:

WB, IHC, IP, ELISA

Cited Applications:

WB, IHC, IF, CoIP

Species Specificity:

human, mouse, rat

Cited Species:

human, mouse, rat

**Note-IHC: suggested antigen retrieval with TE buffer pH 9.0; (\*) Alternatively, antigen retrieval may be performed with citrate buffer pH 6.0**

Positive Controls:

WB : mouse brain tissue, mouse skeletal muscle tissue, mouse heart tissue, human skeletal muscle tissue, rat brain tissue

IP : rat brain tissue,

IHC : human brain tissue,

## Background Information

CaMKII delta, also named as CAMKD and CaMKII delta, belongs to the protein kinase superfamily, CAMK Ser/Thr protein kinase family and CaMK subfamily. CaM-kinase II (CAMK2) is a prominent kinase in the central nervous system that may function in long-term potentiation and neurotransmitter release, composed of four different chains: alpha, beta, gamma, and delta. The CAMK2 protein kinases contain a unique C-terminal subunit association domain responsible for oligomerization. The different chains assemble into homo- or heteromultimeric holoenzymes composed of 8 to 12 subunits. This antibody is specific to the C-term of delta chain, CaMKII delta. It can recognize most isoforms the gene encodes, from 50-72kd. It can recognize the isoform 2,3,4,9,11 of CAMK2D.

## Notable Publications

Author	Pubmed ID	Journal	Application
Cui Ma	33230455	Mol Ther Nucleic Acids	WB
Peng Chen	33707969	J Pain Res	WB
Songxi Tang	35911132	Evid Based Complement Alternat Med	WB

## Storage

Storage:

Store at -20°C. Stable for one year after shipment.

Storage Buffer:

PBS with 0.02% sodium azide and 50% glycerol pH 7.3.

Aliquoting is unnecessary for -20°C storage

For technical support and original validation data for this product please contact:

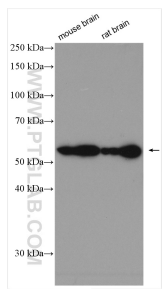
T: 4006900926

E: Proteintech-CN@ptglab.com

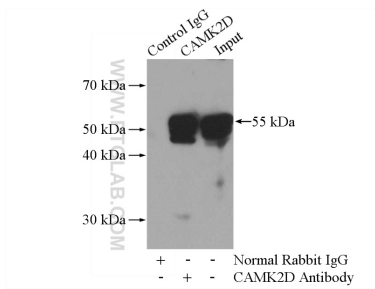
W: ptgcn.com

This product is exclusively available under Proteintech Group brand and is not available to purchase from any other manufacturer.

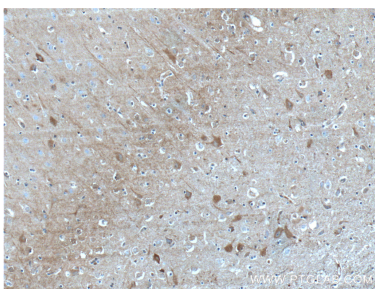
Selected Validation Data



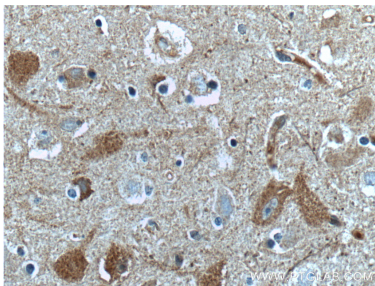
Various lysates were subjected to SDS PAGE followed by western blot with 20667-1-AP (CaMKII delta-Specific antibody) at dilution of 1:1000 incubated at room temperature for 1.5 hours.



IP result of anti-CaMKII delta-Specific (IP:20667-1-AP, 4ug; Detection:20667-1-AP 1:600) with rat brain tissue lysate 4000ug.



Immunohistochemical analysis of paraffin-embedded human brain tissue slide using 20667-1-AP (CaMKII delta-Specific antibody at dilution of 1:200 (under 10x lens). Heat mediated antigen retrieval with Tris-EDTA buffer (pH 9.0).



Immunohistochemical analysis of paraffin-embedded human brain tissue slide using 20667-1-AP (CaMKII delta-Specific antibody at dilution of 1:200 (under 40x lens). Heat mediated antigen retrieval with Tris-EDTA buffer (pH 9.0).