

For Research Use Only

# L1CAM/CD171 Polyclonal antibody, PBS Only

Catalog Number: 20659-1-PBS



## Basic Information

### Catalog Number:

20659-1-PBS

### Concentration:

1 mg/ml

### Source:

Rabbit

### Isotype:

IgG

### GenBank Accession Number:

NM\_000425

### GeneID (NCBI):

3897

### UNIPROT ID:

P32004

### Full Name:

L1 cell adhesion molecule

### Calculated MW:

140 kDa

### Observed MW:

200-220 kDa, 80 kDa

### Purification Method:

Antigen affinity purification

## Applications

### Tested Applications:

WB, Indirect ELISA

### Species Specificity:

human, mouse, rat

## Background Information

L1CAM, also known as NCAM-L1 or CD171, is a cell adhesion molecule of the immunoglobulin superfamily. It is a 200-220 kDa transmembrane glycoprotein composed of six Ig-like domains and five fibronectin type III repeats followed by a transmembrane region and a highly conserved cytoplasmic tail (PMID: 3412448; 22796939). L1CAM is primarily expressed in the nervous system and is involved in neuron-neuron adhesion, neurite fasciculation, outgrowth of neurites, cerebellar granule cell migration, neurite outgrowth on Schwann cells and interactions among epithelial cells of intestinal crypts (PMID: 3412448; 10767310). L1CAM is overexpressed in many human cancers and is often associated with bad prognosis (PMID: 27267927; 26111503). It has been reported that L1CAM can be proteolytically cleaved into a soluble fragment of 140 kDa and an intracellular fragment of 80-85 kDa (PMID: 30842511; 34380733). This antibody raised against 1206-1221aa of human L1CAM detects 200-220 kDa full-length L1CAM and 80-kDa cleaved fragment of L1CAM.

## Storage

### Storage:

Store at -80°C.

**The product is shipped with ice packs. Upon receipt, store it immediately at -80°C**

### Storage Buffer:

PBS only, pH7.3

For technical support and original validation data for this product please contact:

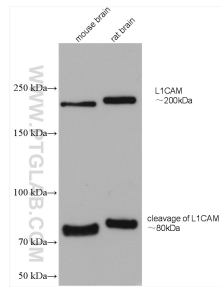
T: 4006900926

E: [Proteintech-CN@ptglab.com](mailto:Proteintech-CN@ptglab.com)

W: [ptgcn.com](http://ptgcn.com)

**This product is exclusively available under Proteintech Group brand and is not available to purchase from any other manufacturer.**

## Selected Validation Data



Various lysates were subjected to SDS PAGE followed by western blot with 20659-1-AP (L1CAM antibody) at dilution of 1:1000 incubated at room temperature for 1.5 hours. This data was developed using the same antibody clone with 20659-1-PBS in a different storage buffer formulation.