

For Research Use Only

# NPTX1 Polyclonal antibody

Catalog Number: 20656-1-AP

Featured Product

6 Publications



## Basic Information

**Catalog Number:**

20656-1-AP

**Size:**

550 µg/ml

**Source:**

Rabbit

**Isotype:**

IgG

**GenBank Accession Number:**

NM\_002522

**GeneID (NCBI):**

4884

**UNIPROT ID:**

Q15818

**Full Name:**

neuronal pentraxin I

**Calculated MW:**

47 kDa

**Observed MW:**

47 kDa

**Purification Method:**

Antigen affinity purification

**Recommended Dilutions:**

WB 1:500-1:3000

IHC 1:50-1:500

IF 1:50-1:500

## Applications

**Tested Applications:**

IF/ICC, IF-P, IHC, WB, ELISA

**Cited Applications:**

WB, IF, ColP

**Species Specificity:**

human, mouse, rat

**Cited Species:**

human, mouse

**Note-IHC: suggested antigen retrieval with TE buffer pH 9.0; (\*) Alternatively, antigen retrieval may be performed with citrate buffer pH 6.0**

**Positive Controls:**

**WB:** mouse brain tissue, HepG2 cells, mouse liver tissue, mouse cerebellum tissue, rat cerebellum tissue

**IHC:** mouse brain tissue, human gliomas tissue

**IF:** rat brain tissue, HeLa cells

## Background Information

NPTX1, also named as NP1, may mediate uptake of degraded synaptic material which could play an important role in synaptic remodeling. NPTX1 can mediate the neuronal and glial uptake of the snake venom toxin taipoxin. The antibody is specific to NPTX1.

## Notable Publications

Author	Pubmed ID	Journal	Application
Kai Zhang	34142698	Acta Biochim Biophys Sin (Shanghai)	WB
Réka Á Kovács	33628204	Front Immunol	WB, ColP
Brianna Dufek	32822386	PLoS One	IF

## Storage

**Storage:**

Store at -20°C. Stable for one year after shipment.

**Storage Buffer:**

PBS with 0.02% sodium azide and 50% glycerol pH 7.3.

Aliquoting is unnecessary for -20°C storage

For technical support and original validation data for this product please contact:

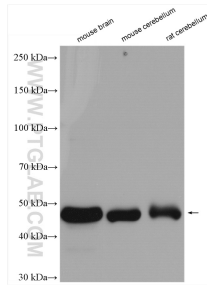
T: 4006900926

E: Proteintech-CN@ptglab.com

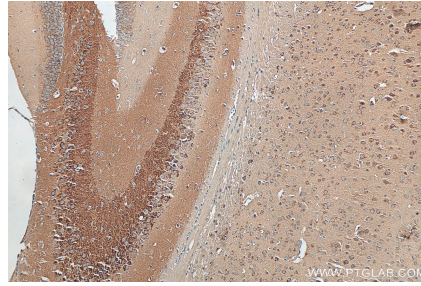
W: ptgcn.com

**This product is exclusively available under Proteintech Group brand and is not available to purchase from any other manufacturer.**

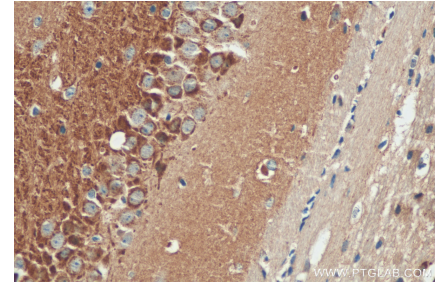
## Selected Validation Data



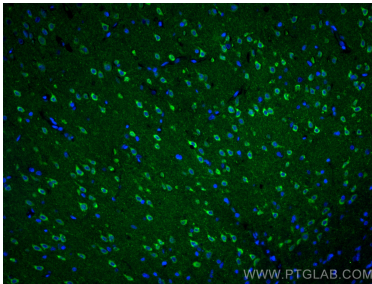
Various lysates were subjected to SDS PAGE followed by western blot with 20656-1-AP (NPTX1 antibody) at dilution of 1:1500 incubated at room temperature for 1.5 hours.



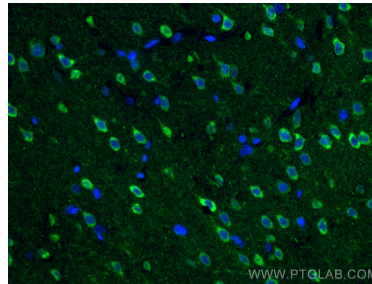
Immunohistochemical analysis of paraffin-embedded mouse brain tissue slide using 20656-1-AP (NPTX1 antibody) at dilution of 1:200 (under 10x lens). Heat mediated antigen retrieval with Tris-EDTA buffer (pH 9.0).



Immunohistochemical analysis of paraffin-embedded mouse brain tissue slide using 20656-1-AP (NPTX1 antibody) at dilution of 1:200 (under 40x lens). Heat mediated antigen retrieval with Tris-EDTA buffer (pH 9.0).



Immunofluorescent analysis of (4% PFA) fixed rat brain tissue using NPTX1 antibody (20656-1-AP) at dilution of 1:200 and CoraLite®488-Conjugated AffiniPure Goat Anti-Rabbit IgG(H+L).



Immunofluorescent analysis of (4% PFA) fixed rat brain tissue using NPTX1 antibody (20656-1-AP) at dilution of 1:200 and CoraLite®488-Conjugated AffiniPure Goat Anti-Rabbit IgG(H+L).