

For Research Use Only

POLR2A Polyclonal antibody

Catalog Number: 20655-1-AP

Featured Product

6 Publications



Basic Information

Catalog Number:

20655-1-AP

Concentration:

500 µg/ml

Source:

Rabbit

Isotype:

IgG

GenBank Accession Number:

NM_000937

GeneID (NCBI):

5430

UNIPROT ID:

P24928

Full Name:

polymerase (RNA) II (DNA directed)
polypeptide A, 220kDa

Calculated MW:

217 kDa

Observed MW:

210-250 kDa

Purification Method:

Antigen affinity purification

Recommended Dilutions:

WB: 1:500-1:1000

IHC: 1:50-1:500

Applications

Tested Applications:

WB, IHC, ELISA

Cited Applications:

WB, IF

Species Specificity:

human, monkey, mouse

Cited Species:

human, rat

**Note-IHC: suggested antigen retrieval with
TE buffer pH 9.0; (*) Alternatively, antigen
retrieval may be performed with citrate
buffer pH 6.0**

Positive Controls:

WB : A431 cells, HeLa cells, NIH/3T3 cells

IHC : human pancreas cancer tissue, mouse pancreas
tissue

Background Information

Notable Publications

Author	Pubmed ID	Journal	Application
Yuan Yuan Zhang	33330454	Front Cell Dev Biol	WB
Guanqun Huang	29764463	J Exp Clin Cancer Res	WB, IF
Zhenyu Huang	40057176	Neuropharmacology	WB, IF

Storage

Storage:

Store at -20°C. Stable for one year after shipment.

Storage Buffer:

PBS with 0.02% sodium azide and 50% glycerol, pH7.3

Aliquoting is unnecessary for -20°C storage

For technical support and original validation data for this product please contact:

T: 4006900926

E: Proteintech-CN@ptglab.com

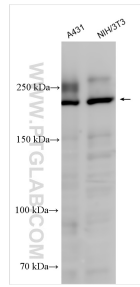
W: ptgcn.com

This product is exclusively available under Proteintech Group brand and is not available to purchase from any other manufacturer.

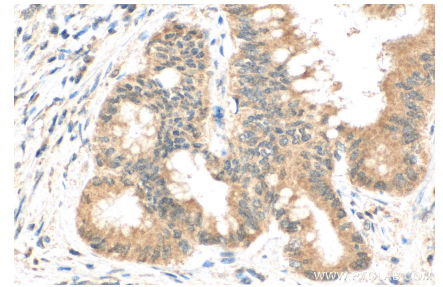
Selected Validation Data



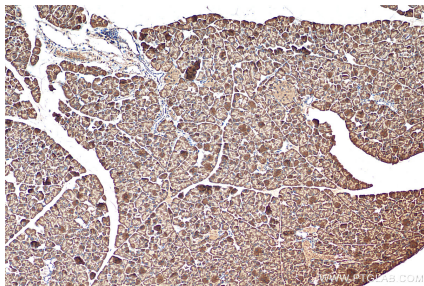
HeLa cells were subjected to SDS PAGE followed by western blot with 20655-1-AP (POLR2A antibody) at dilution of 1:300 incubated at room temperature for 1.5 hours.



Various lysates were subjected to SDS PAGE followed by western blot with 20655-1-AP (POLR2A antibody) at dilution of 1:800 incubated at room temperature for 1.5 hours.



Immunohistochemical analysis of paraffin-embedded human pancreas cancer tissue slide using 20655-1-AP (POLR2A antibody) at dilution of 1:200 (under 40x lens). Heat mediated antigen retrieval with Tris-EDTA buffer (pH 9.0).



Immunohistochemical analysis of paraffin-embedded mouse pancreas tissue slide using 20655-1-AP (POLR2A antibody) at dilution of 1:200 (under 10x lens). Heat mediated antigen retrieval with Tris-EDTA buffer (pH 9.0).