

For Research Use Only

E-cadherin Polyclonal antibody

Catalog Number: 20648-1-AP **7 Publications**



Basic Information

Catalog Number: 20648-1-AP	GenBank Accession Number: NM_004360	Purification Method: Antigen affinity purification
Size: 200 µg/ml	GeneID (NCBI): 999	Recommended Dilutions: WB 1:500-1:1000 IHC 1:50-1:200 IF/ICC 1:10-1:100
Source: Rabbit	UNIPROT ID: P12830	
Isotype: IgG	Full Name: cadherin 1, type 1, E-cadherin (epithelial)	
	Calculated MW: 97 kDa	
	Observed MW: 100-125 kDa	

Applications

Tested Applications: WB, IF/ICC, IHC, ELISA	Positive Controls: WB : PC-3 cells, IHC : human colon cancer tissue, human liver cancer tissue IF/ICC : HepG2 cells,
Cited Applications: WB, IF	
Species Specificity: human, mouse, rat	
Cited Species: human, mouse	

Note-IHC: suggested antigen retrieval with TE buffer pH 9.0; (*) Alternatively, antigen retrieval may be performed with citrate buffer pH 6.0

Background Information

E-cadherin (epithelial cadherin), also known as CDH1 (cadherin 1) or CAM 120/80, is a classical member of the cadherin superfamily which also include N-, P-, R-, and B-cadherins. E-cadherin is expressed on the cell surface in most epithelial tissues. The extracellular region of E-cadherin establishes calcium-dependent homophilic trans binding, providing specific interaction with adjacent cells, while the cytoplasmic domain is connected to the actin cytoskeleton through the interaction with p120-, α -, β -, and γ -catenin (plakoglobin). E-cadherin is important in the maintenance of the epithelial integrity, and is involved in mechanisms regulating proliferation, differentiation, and survival of epithelial cell. E-cadherin may also play a role in tumorigenesis. It is considered to be an invasion suppressor protein and its loss is an indicator of high tumor aggressiveness. This antibody is specific to CDH1.

Notable Publications

Author	Pubmed ID	Journal	Application
Wenhua Huang	36293081	Int J Mol Sci	WB
Tianming Liu	26459119	Mol Med Rep	WB
Thankam S Nair	34371293	Tissue Cell	IF

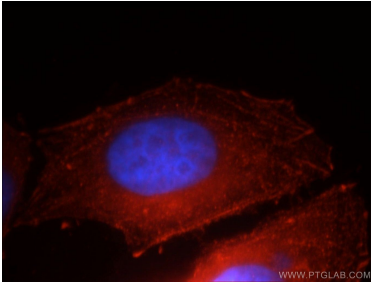
Storage

Storage:
Store at -20°C. Stable for one year after shipment.
Storage Buffer:
PBS with 0.02% sodium azide and 50% glycerol pH 7.3.
Aliquoting is unnecessary for -20°C storage

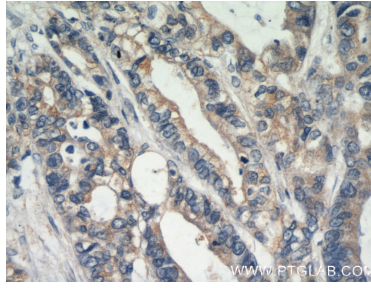
For technical support and original validation data for this product please contact:
T: 4006900926 E: Proteintech-CN@ptglab.com W: ptgcn.com

This product is exclusively available under Proteintech Group brand and is not available to purchase from any other manufacturer.

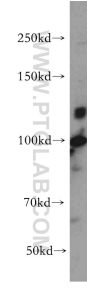
Selected Validation Data



Immunofluorescent analysis of HepG2 cells, using CDH1 antibody 20648-1-AP at 1:25 dilution and Rhodamine-labeled goat anti-rabbit IgG (red). Blue pseudocolor = DAPI (fluorescent DNA dye).



Immunohistochemical analysis of paraffin-embedded human colon cancer using 20648-1-AP (E-cadherin antibody) at dilution of 1:50 (under 40x lens).



PC-3 cells were subjected to SDS PAGE followed by western blot with 20648-1-AP (E-cadherin antibody) at dilution of 1:500 incubated at room temperature for 1.5 hours.