

HERPUD2 Polyclonal antibody

Catalog Number: 20640-1-AP

1 Publications

Basic Information

Catalog Number: 20640-1-AP	GenBank Accession Number: BC005091	Purification Method: Antigen affinity purification
Size: 350 µg/ml	GeneID (NCBI): 64224	Recommended Dilutions: WB 1:500-1:1000
Source: Rabbit	UNIPROT ID: Q9BSE4	IHC 1:20-1:200
Isotype: IgG	Full Name: HERPUD family member 2	IF/ICC 1:10-1:100
Immunogen Catalog Number: AG14702	Calculated MW: 406 aa, 45 kDa	
	Observed MW: 35-45 kDa	

Applications

Tested Applications: IF/ICC, IHC, WB, ELISA	Positive Controls:
Cited Applications: WB	WB : A549 cells,
Species Specificity: human	IHC : human kidney tissue,
Cited Species: human	IF/ICC : HepG2 cells,
Note-IHC: suggested antigen retrieval with TE buffer pH 9.0; (*) Alternatively, antigen retrieval may be performed with citrate buffer pH 6.0	

Background Information

HERPUD2, also named as Homocysteine-responsive endoplasmic reticulum-resident ubiquitin-like domain member 2 protein, is a 406 amino acid protein, which contains one ubiquitin-like domain. HERPUD2 as a single-pass membrane protein could be involved in the unfolded protein response (UPR) pathway. HERPUD2 may exist as two isoforms 406aa, 45 kDa and 297aa 33 kDa (Genebank: EAW94050).

Notable Publications

Author	Pubmed ID	Journal	Application
Chiara Riganti	25681670	Cancer Lett	WB

Storage

Storage:
Store at -20°C. Stable for one year after shipment.

Storage Buffer:
PBS with 0.02% sodium azide and 50% glycerol pH 7.3.

Aliquoting is unnecessary for -20°C storage

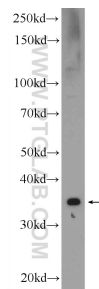
For technical support and original validation data for this product please contact:

T: 4006900926

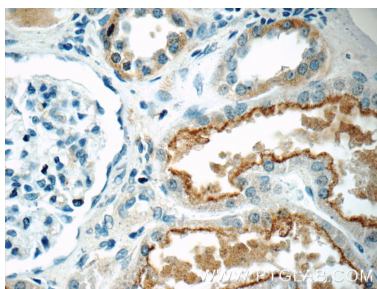
E: Proteintech-CN@ptglab.comW: ptgcn.com

This product is exclusively available under Proteintech Group brand and is not available to purchase from any other manufacturer.

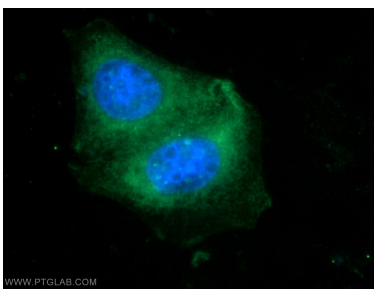
Selected Validation Data



A549 cells were subjected to SDS PAGE followed by western blot with 20640-1-AP (HERPUD2 Antibody) at dilution of 1:600 incubated at room temperature for 1.5 hours.



Immunohistochemical analysis of paraffin-embedded human kidney tissue slide using 20640-1-AP (HERPUD2 Antibody) at dilution of 1:50 (under 40x lens).



Immunofluorescent analysis of HepG2 cells using 20640-1-AP (HERPUD2 antibody) at dilution of 1:25 and Alexa Fluor 488-conjugated AffiniPure Goat Anti-Rabbit IgG(H+L).