

# CPPED1 Polyclonal antibody

Catalog Number: 20628-1-AP

## Basic Information

Catalog Number:

20628-1-AP

Size:

187 µg/ml

Source:

Rabbit

Isotype:

IgG

Immunogen Catalog Number:

AG14572

GenBank Accession Number:

BC006289

GeneID (NCBI):

55313

UNIPROT ID:

Q9BRF8

Full Name:

calcineurin-like phosphoesterase domain containing 1

Calculated MW:

314 aa, 36 kDa

Observed MW:

28-35 kDa

Purification Method:

Antigen affinity purification

Recommended Dilutions:

WB 1:200-1:1000

IHC 1:20-1:200

## Applications

Tested Applications:

IHC, WB, ELISA

Species Specificity:

human

**Note-IHC: suggested antigen retrieval with TE buffer pH 9.0; (\*) Alternatively, antigen retrieval may be performed with citrate buffer pH 6.0**

Positive Controls:

WB : SMMC-7721 cells,

IHC : human liver cancer tissue,

## Background Information

CPPED1, also named as CSTP1, plays an inhibitory role in glucose uptake by adipocytes. It has some isoforms with MW 20 kDa and 28-35 kDa.

## Storage

Storage:

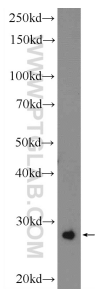
Store at -20°C. Stable for one year after shipment.

Storage Buffer:

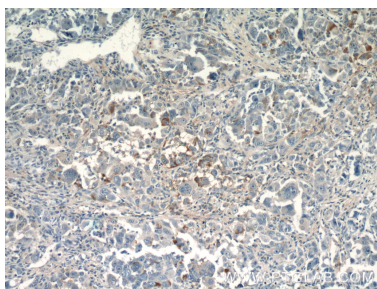
PBS with 0.02% sodium azide and 50% glycerol pH 7.3.

Aliquoting is unnecessary for -20°C storage

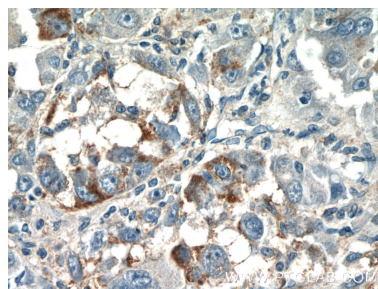
Selected Validation Data



SMMC-7721 cells were subjected to SDS PAGE followed by western blot with 20628-1-AP (CPPED1 Antibody) at dilution of 1:300 incubated at room temperature for 1.5 hours.



Immunohistochemical analysis of paraffin-embedded human liver cancer tissue slide using 20628-1-AP (CPPED1 Antibody) at dilution of 1:50 (under 10x lens).



Immunohistochemical analysis of paraffin-embedded human liver cancer tissue slide using 20628-1-AP (CPPED1 Antibody) at dilution of 1:50 (under 40x lens).