

For Research Use Only

SLC22A15 Polyclonal antibody

Catalog Number: 20626-1-AP



Basic Information

Catalog Number:

20626-1-AP

Concentration:

407 ug/ml

Source:

Rabbit

Isotype:

IgG

Immunogen Catalog Number:

AG14547

GenBank Accession Number:

BC026358

GeneID (NCBI):

55356

UNIPROT ID:

Q8IZD6

Full Name:

solute carrier family 22, member 15

Calculated MW:

535aa, 59 kDa; 547aa, 61 kDa

Observed MW:

61-66 kDa

Purification Method:

Antigen affinity purification

Recommended Dilutions:

WB 1:500-1:3000

Applications

Tested Applications:

WB, ELISA

Species Specificity:

human

Positive Controls:

WB : HEK-293 cells, A431 cells, human brain tissue, human heart tissue, human placenta tissue, human skeletal muscle tissue, L02 cells

Background Information

Storage

Storage:

Store at -20°C. Stable for one year after shipment.

Storage Buffer:

PBS with 0.02% sodium azide and 50% glycerol pH 7.3.

Aliquoting is unnecessary for -20°C storage

For technical support and original validation data for this product please contact:

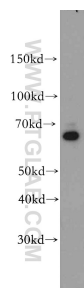
T: 4006900926

E: Proteintech-CN@ptglab.com

W: ptgcn.com

This product is exclusively available under Proteintech Group brand and is not available to purchase from any other manufacturer.

Selected Validation Data



HEK-293 cells were subjected to SDS PAGE followed by western blot with 20626-1-AP (SLC22A15 antibody) at dilution of 1:500 incubated at room temperature for 1.5 hours.