

C2orf7 Polyclonal antibody

Catalog Number: 20616-1-AP

Basic Information

Catalog Number:

20616-1-AP

Size:

600 µg/ml

Source:

Rabbit

Isotype:

IgG

Immunogen Catalog Number:

AG14678

GenBank Accession Number:

BC005069

GeneID (NCBI):

84279

UNIPROT ID:

Q9B5G0

Full Name:

chromosome 2 open reading frame 7

Calculated MW:

188 aa, 21 kDa

Observed MW:

21-30 kDa

Purification Method:

Antigen affinity purification

Recommended Dilutions:

WB 1:500-1:2000

Applications

Tested Applications:

WB, ELISA

Species Specificity:

human

Positive Controls:

WB : human plasma, human serum

Background Information

Protease-associated domain-containing 1 (PRADC1), also known as C2orf7, is an enigmatic secretory protein widely expressed in humans and mice. C2orf7 is a 30-kDa N-glycosylated secretory protein with a protease-associated domain (PMID: 31689374).

Storage

Storage:

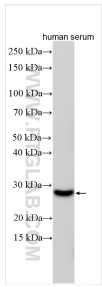
Store at -20°C. Stable for one year after shipment.

Storage Buffer:

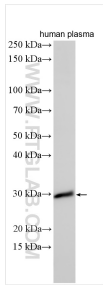
PBS with 0.02% sodium azide and 50% glycerol pH 7.3.

Aliquoting is unnecessary for -20°C storage

Selected Validation Data



Various lysates were subjected to SDS PAGE followed by western blot with 20616-1-AP (C2orf7 antibody) at dilution of 1:600 incubated at room temperature for 1.5 hours.



Various lysates were subjected to SDS PAGE followed by western blot with 20616-1-AP (C2orf7 antibody) at dilution of 1:1000 incubated at room temperature for 1.5 hours.