

For Research Use Only

SLC37A4 Polyclonal antibody

Catalog Number: 20612-1-AP

2 Publications



Basic Information

Catalog Number:

20612-1-AP

Concentration:

200 ug/ml

Source:

Rabbit

Isotype:

IgG

Immunogen Catalog Number:

AG14660

GenBank Accession Number:

BC015650

GeneID (NCBI):

2542

UNIPROT ID:

O43826

Full Name:

solute carrier family 37 (glucose-6-phosphate transporter), member 4

Calculated MW:

429 aa, 46 kDa

Observed MW:

46 kDa

Purification Method:

Antigen affinity purification

Recommended Dilutions:

WB 1:500-1:2000

IHC 1:20-1:200

Applications

Tested Applications:

WB, IHC, ELISA

Cited Applications:

WB, IF

Species Specificity:

human, mouse, rat

Cited Species:

human

Positive Controls:

WB : HepG2 cells, HeLa cells, mouse kidney tissue, mouse liver tissue, rat liver tissue

IHC : human kidney tissue, human liver tissue

Note-IHC: suggested antigen retrieval with TE buffer pH 9.0; (*) Alternatively, antigen retrieval may be performed with citrate buffer pH 6.0

Background Information

Notable Publications

Author	Pubmed ID	Journal	Application
Keita Tanigaki	39433915	Sci Rep	IF
Jianye Zhong	37532687	Cell Death Discov	WB

Storage

Storage:

Store at -20°C. Stable for one year after shipment.

Storage Buffer:

PBS with 0.02% sodium azide and 50% glycerol pH 7.3.

Aliquoting is unnecessary for -20°C storage

For technical support and original validation data for this product please contact:

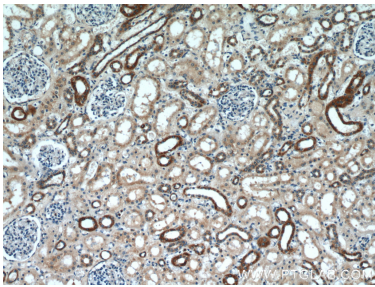
T: 4006900926

E: Proteintech-CN@ptglab.com

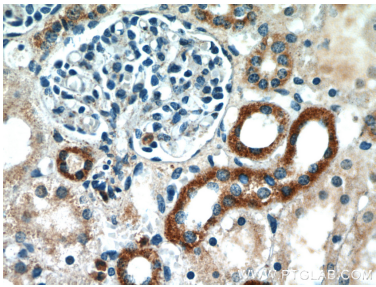
W: ptgcn.com

This product is exclusively available under Proteintech Group brand and is not available to purchase from any other manufacturer.

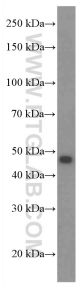
Selected Validation Data



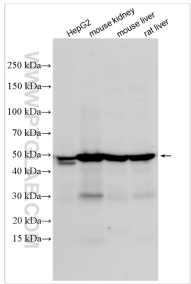
Immunohistochemical analysis of paraffin-embedded human kidney using 20612-1-AP (SLC37A4 antibody) at dilution of 1:50 (under 10x lens).



Immunohistochemical analysis of paraffin-embedded human kidney using 20612-1-AP (SLC37A4 antibody) at dilution of 1:50 (under 40x lens).



mouse liver tissue were subjected to SDS PAGE followed by western blot with 20612-1-AP (SLC37A4 Antibody) at dilution of 1:1000 incubated at room temperature for 1.5 hours.



Various lysates were subjected to SDS PAGE followed by western blot with 20612-1-AP (SLC37A4 antibody) at dilution of 1:1000 incubated at room temperature for 1.5 hours.