

For Research Use Only

HECTD1 Polyclonal antibody, PBS Only

Catalog Number: 20605-1-PBS

Featured Product



Basic Information

Catalog Number:

20605-1-PBS

Source:

Rabbit

Isotype:

IgG

Immunogen Catalog Number:

AG14581

GenBank Accession Number:

BC006237

GeneID (NCBI):

25831

UNIPROT ID:

Q9ULT8

Full Name:

HECT domain containing 1

Calculated MW:

2612 aa, 290 kDa

Observed MW:

290 kDa

Purification Method:

Antigen affinity purification

Applications

Tested Applications:

WB, IHC, IF/ICC, Indirect ELISA

Species Specificity:

human, mouse

Background Information

HECTD1 (E3 ubiquitin-protein ligase), which accepts ubiquitin from an E2 ubiquitin-conjugating enzyme in the form of a thioester and then directly transfers the ubiquitin to targeted substrates, may be required for development of the head mesenchyme and neural tube closure. It is also involved in sporadic Parkinson's disease (PMID:16714300). This protein is specific to HECTD1.

Storage

Storage:

Store at -80°C.

The product is shipped with ice packs. Upon receipt, store it immediately at -80°C

Storage Buffer:

PBS only, pH7.3

For technical support and original validation data for this product please contact:

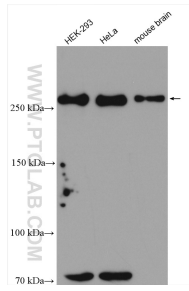
T: 4006900926

E: Proteintech-CN@ptglab.com

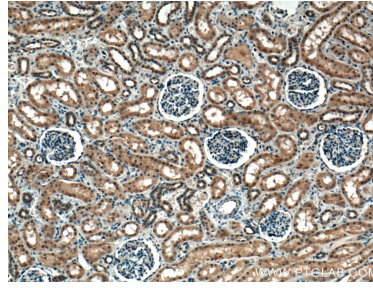
W: ptgcn.com

This product is exclusively available under Proteintech Group brand and is not available to purchase from any other manufacturer.

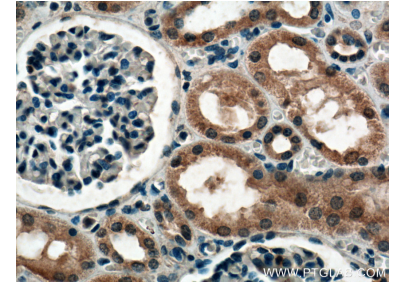
Selected Validation Data



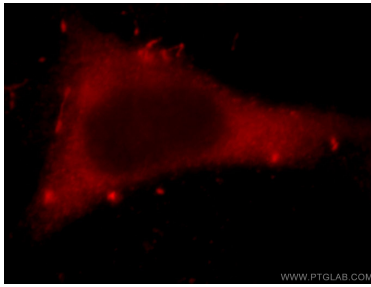
Various lysates were subjected to SDS PAGE followed by western blot with 20605-1-AP (HECTD1 antibody) at dilution of 1:1500 incubated at room temperature for 1.5 hours. This data was developed using the same antibody clone with 20605-1-PBS in a different storage buffer formulation.



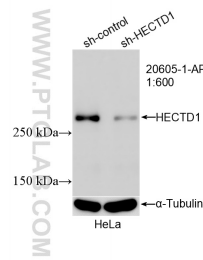
Immunohistochemical analysis of paraffin-embedded human kidney tissue slide using 20605-1-AP (HECTD1 antibody) at dilution of 1:200 (under 10x lens). Heat mediated antigen retrieval with Tris-EDTA buffer (pH 9.0). This data was developed using the same antibody clone with 20605-1-PBS in a different storage buffer formulation.



Immunohistochemical analysis of paraffin-embedded human kidney tissue slide using 20605-1-AP (HECTD1 antibody) at dilution of 1:200 (under 40x lens). Heat mediated antigen retrieval with Tris-EDTA buffer (pH 9.0). This data was developed using the same antibody clone with 20605-1-PBS in a different storage buffer formulation.



Immunofluorescent analysis of HeLa cells, using HECTD1 antibody 20605-1-AP at 1:25 dilution and Rhodamine-labeled goat anti-rabbit IgG (red). This data was developed using the same antibody clone with 20605-1-PBS in a different storage buffer formulation.



WB result of HECTD1 antibody (20605-1-AP; 1:600; incubated at room temperature for 1.5 hours) with sh-Control and sh-HECTD1 transfected HeLa cells. This data was developed using the same antibody clone with 20605-1-PBS in a different storage buffer formulation.